

+

KEENAN[®]
an **Altech** company

Operators Manual

KEENAN MechFiber400+

Effective from models MF40N112

Revision H02 Feb 2023 EN





CONTENTS

Contents: MechFiber400+ service and maintenance section

SECTION	CONTENTS	PAGE
	Part I (Service and maintenance, MechFiber400+ model)	
1	Introduction	3
1.1	Purpose of this manual	3
1.2	Maintenance checklist	3
1.3	Chains	5
1.4	Oil level	7
1.5	Chain tensioning	7
1.6	Greasing	10
1.7	Blade maintenance	14
1.8	Shear bolts	14
1.9	Nuts and bolts	14
1.10	Tyres	15
1.11	Hitch height adjustment	15
1.12	Specifications	19
1.13	Soda grain	19
	Part II (Parts list)	
2	Parts list	20
2.1	Chassis parts	21
2.2	Front cover parts	22
2.3	Standard feed-out tray parts	24
2.4	Fold-down tray parts (OE option)	26
2.5	Rear parts	29
2.6	VFC-door parts	30
2.7	VFC-door indicator parts	31
2.8	Driveline parts	32
2.9	Rotor and paddle parts	37
2.10	Auger parts	38
2.11	Body sealing parts	39
2.12	Body blade parts	40
2.13	Weighing system	41
2.14	Hydraulic system parts	42
2.15	Axle parts	43
2.16	Ancillary parts	44
	Part III (Annexes)	
3	Annexes	45
3.1	EC Declaration of Conformity	45
3.2	UK Declaration of Conformity	46
3.3	International patents	46
	Part IV (Contact details)	
4	KEENAN contact details	47
4.1	Contact details	47

Part 1: Service and maintenance, MechFiber400+ model

1 Introduction

1.1 Purpose of this manual

This manual has been designed to present the specific information you need to operate and maintain the KEENAN MechFiber400+ model. Further information on general service and maintenance is included in the general KEENAN MechFiber operator's manual.



WARNING:


Prior to carrying out any maintenance on the machine, always ensure that the tractor engine is stopped, and disconnect the P.T.O. and hydraulic hoses from the tractor. Observe safety precautions at all times when working on the machine. Read Section 4 in the general machine information manual on safety before attempting to work on the machine.

1.2 Maintenance checklist

Daily	
Cleaning:	Clean all old feed from around the body to prevent corrosion and damage to the paint.
VFC door:	Before using the machine, check that the door opens and shuts fully and operates smoothly.
Wheel nuts:	Check the torque settings.
Oil sump:	Check the oil level, and replenish with Total/Finol Chainac MP oil as required.
Weekly (40 hours)	
PTO input shaft:	Grease the universal joints (two fittings) and the sliding half shafts (smear grease on surfaces). For further information, please refer to the PTO Maintenance Booklet supplied with the PTO.
Drive (gear) box:	Grease the drive input-shaft bearings (two fittings).
Rotor bearings:	Grease the front and rear rotor bearings (two fittings).
Feed discharge auger:	Grease the front and rear auger bearings (two fittings).
Idler shaft:	Grease the front and rear idler shaft bearings (two fittings).
Drive chains:	Check the condition of the primary and secondary chains.
Chain tensioners:	Grease the pivot points on the primary and secondary chain tensioner mechanisms.

VFC-door:	Grease the door's hydraulic cylinders (four fittings) and the slide plates (smear food-grade grease on surfaces). The recommended grease is Ceran FG, supplied by TOTAL Lubricants, or similar food and feed industry-grade grease.
Chassis:	Grease the hitch pivot tube (where the swivel hitch is fitted).
Single axle:	Grease all six pivot points listed below: <ul style="list-style-type: none"> - Two on each brake rod (four in total) - One on each brake arm (two in total)
Tandem axle (if fitted):	Grease all 14 pivot points listed below: <ul style="list-style-type: none"> - Two on each brake rod (eight in total) - One on each brake arm (four in total) - One on each spring bogie pivot pin (two in total)
Axle U-bolts:	Check axle U-bolt torque settings (tandem only).
Tyres:	Check that tyres are inflated to the recommended pressures, and make sure the wheel nuts are tight.
Monthly	
Bale handler:	Grease each tine pivot and check the tines for looseness. Check tine buffers for cracks, splits or degradation.
Yearly (end of season or 450 hours)	
Drive system:	Open oil bath drain bung and drain off existing oil. Wash off all dirt and old oil using paraffin, then dry. Refill bath with new oil to required level (see Section 1.5) and run machine for 5 to 10 minutes to ensure that all chains have been lubricated.
Overall machine:	Before storage, wash the complete machine, then grease or oil all weekly lubrication points as outlined above. Open the drain bung in the mixing hopper. Check tyre pressures. Store the machine under a cover or tarpaulin, if possible.
Electronic weigh-box:	If the machine is to be stored, remove the weigh box unit from the machine and keep it in a dry place. Lightly grease the load cell cable connector end and place it into a plastic bag.
Wheels:	Remove and inspect wheel hub. Replace worn parts, redress and re-fit.
Blades:	Blades need to be kept sharpened. This will have to be done without taking the temper from (i.e., overheating) the blades. If the machine is operated with blunt blades, it will place major stress on the drive system. Blades may have to be replaced when it is not practical to sharpen them.

Table 1: Maintenance checklist

<p>WARNING:</p> <p> Due to hazards involved in entering the mixing chamber, it is recommended that all blade replacement is carried out by a KEENAN-authorized service agent who is specially trained to do so. Contact your local agent (see back cover for details).</p>	
----------------------------------------------------------------------------------------------------------------------------------------------------------------------------------------------------------------------------------------------------------------------------------------------------------------------------------------------------------------------	--

1.3 Chains

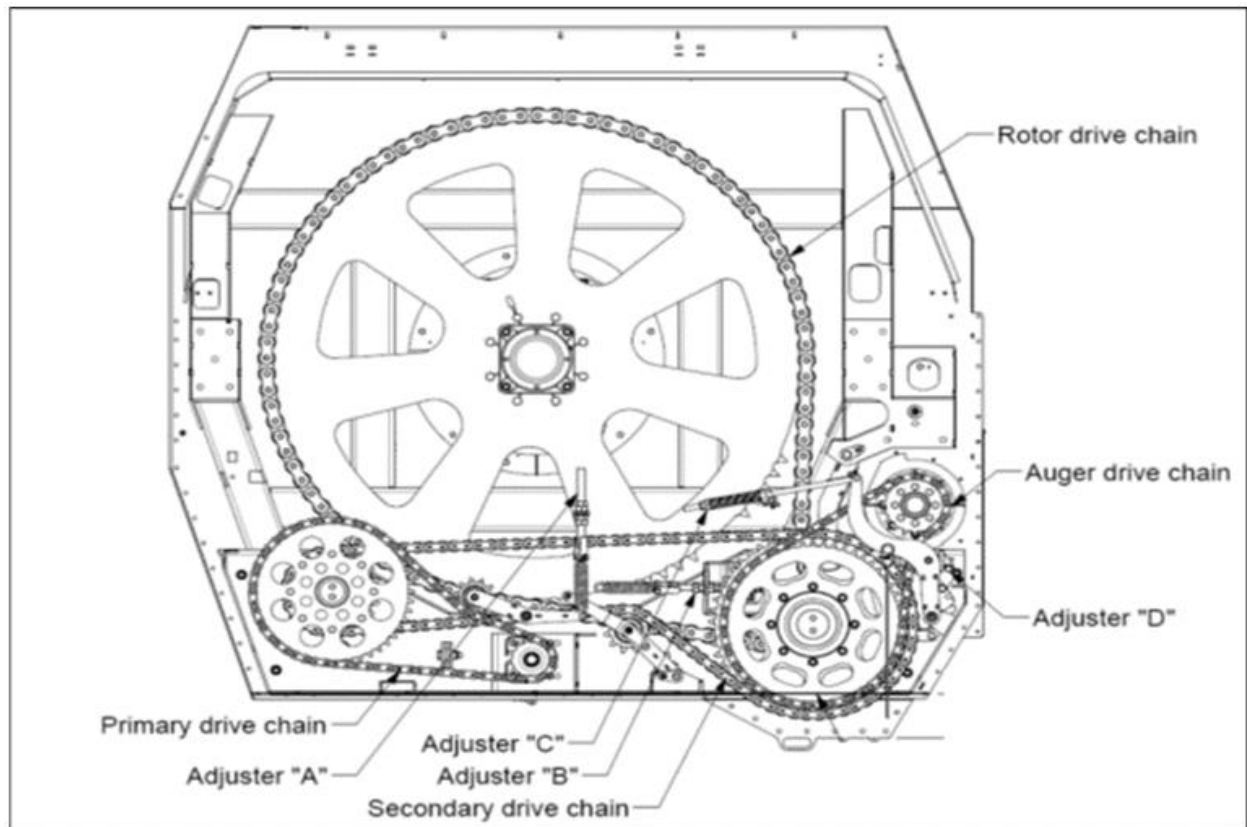


Figure 1 MF400+ drive system

Each week check the condition of the chain tension arms and adjust as required. There are four chains used on the MechFiber400+ model. The primary drive chain (ASA120) drives the primary idler shaft from the input shaft (see figure-1) and the secondary chain (ASA140HS) drives the secondary idler. The third chain (ASA200HS) drives the rotor. The fourth chain (ASA120) drives the auger independently. All four chains are tensioned by a spring assembly on the slack side of the chain.

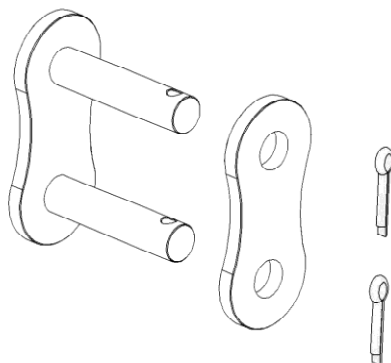


Figure 2: Chain joiner link

Note: The ASA120 chain use split pins in the joiner link as shown, the ASA140HS and ASA200HS chains must use roll pins due to the high loads involved

	540 RPM Driveline	1,000 RPM Driveline
Primary drive chain	ASA120	ASA100 Duplex
Links	72 including joiner	88 including joiner
Pitch (mm)	38.1	31.75
Pitch (inches)	1.5	1.25
Chain length (mm)	2,743.2	2,794
Chain length (inches)	108	110
Secondary drive chain	ASA140HS	ASA140HS
Links	118 including joiners	116 including joiners
Pitch (mm)	44.45	44.45
Pitch (inches)	1.75	1.75
Chain length (mm)	5,245.1	5,156.2
Chain length (inches)	206.5	203
Rotor drive chain	ASA200HS	Same as 540 RPM
Links	108 including joiner	
Pitch (mm)	63.5	
Pitch (inches)	2.5	
Chain length (mm)	6,858	
Chain length (inches)	270	
Auger drive chain	ASA120	Same as 540 RPM
Links	70 including joiner	
Pitch (mm)	38.1	
Pitch (inches)	1.5	
Chain length (mm)	2,667	
Chain length (inches)	105	

Table 2: MechFiber400+ drive chains

CAUTION:

- Failure to maintain oil on the chains may reduce their working life by 90%. Chain damage is not covered by factory warranty. See the warranty section for more details.

It is also essential to monitor and maintain the required chain tension. Chain tension is adjustable for both the primary and secondary chains. (See section on chain tensioning.)

CAUTION:

- For the first month of ownership (i.e., during the chain bedding-in period), it is recommended to check chain tension daily. (See section on chain tensioning.)

1.4 Oil level

The oil reservoir (or sump) is located on the left side of the drive system. Each day, check the level of the oil reservoir. Before checking the oil level, ensure that the machine is sitting level (both front to rear and left to right). An oil-level viewing window has been fitted to the front panel of the drive system and can be viewed when the front left hand cover is opened. The recommended oil level should be midway along this window. This represents 28 litres of oil in the sump. The minimum level is -15 mm from the centre and the maximum level is +15 mm from the centre.

If the oil level is low, top it up with chain-bar oil (the properties of which allow it cling to the chains longer). Use Total/Finol Chainac MP if available or a suitable equivalent (volumetric mass of 879 kg/m^3 @ 15°C and viscosity rating of $150\text{mm}^2/\text{s}$ @ 40°C). Do not use grease on the chains, as it is unsuitable for the application and will not allow for the lubrication of the vital internal parts of the chain.

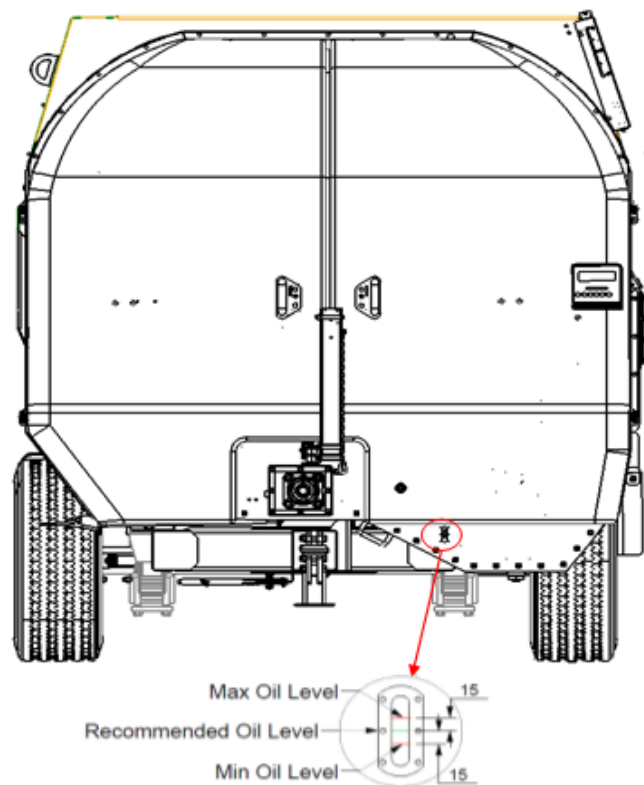


Figure 3: Oil level

1.5 Chain tensioning

With use, the drive chains will extend slightly over time. To compensate for this, all KEENAN MechFiber machines are fitted with a tensioner mechanism on the slack side of the chain. The primary and secondary chain tensioners comprise of a pivoting tension arm connected to a tension spring and adjusted via a threaded bolt passing through a shoulder plate. The rotor chain tensioner comprises of a pivoting tension arm connected to a compression spring and adjusted via a second pivoting arm with locating bolt holes. The auger chain tensioner comprises of a pivoting tension arm connected to a compression spring via a pull rod and adjusted via a

threaded spring seat on the end of this rod. In order to prevent the chain jumping and premature wear the chain must be held at the correct preload tension at all times and should be checked weekly.

1. Setting tension on the primary chain

This preload tension can be set by adjusting the vertical threaded bolt in the centre of the drive system (adjuster “A” in Figure 1 and Figure 4). The correct tension will be applied to the chain when the tension spring is extended to **220 mm** between mounting centres. Once set, retighten all locking nuts. **It is recommended to check the tension weekly in the first few weeks of operation as the chain, sprockets and tensioner “beds in” and may need to be adjusted.**

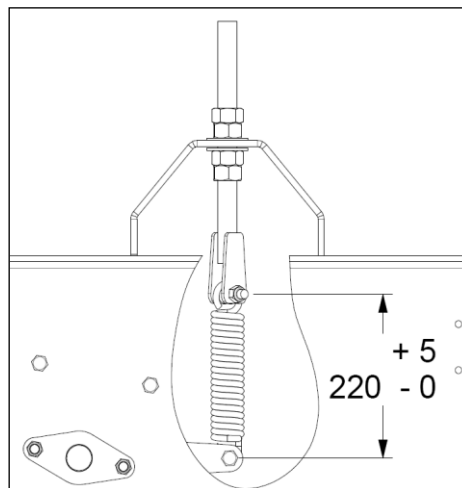


Figure 4: Primary chain tensioner spring setting

2. Setting tension on the secondary chain

The preload tension on this chain can be set by adjusting the horizontal threaded bolt situated behind the secondary idler shaft driven sprocket (adjuster “B” in Figure 1 and Figure 5). As above the correct tension will be applied to the chain when the tension spring is extended to **235 mm** between mounting centres. Once set, retighten all locking nuts.

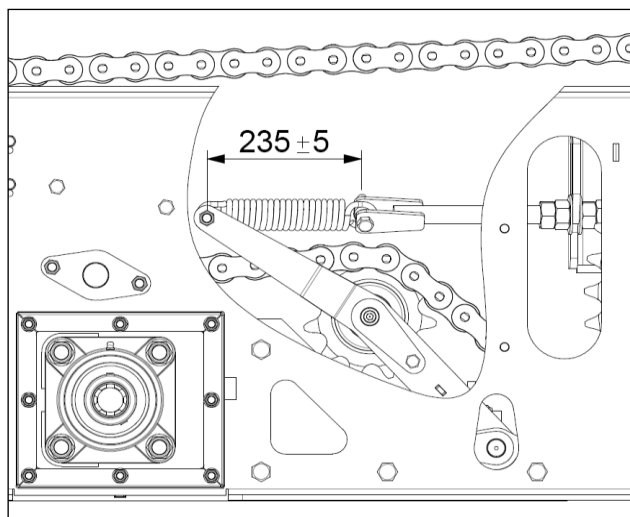


Figure 5: Secondary chain tensioner spring setting

3. Setting tension on the auger chain

The preload tension on this chain can be set by adjusting the horizontal threaded spring seat situated to the front of the drive system (adjuster “C” in Figure 1 and Figure 6). The correct tension will be applied to the chain when the spring is compressed to **180 mm**. Once set, retighten the locking nut against the seat.

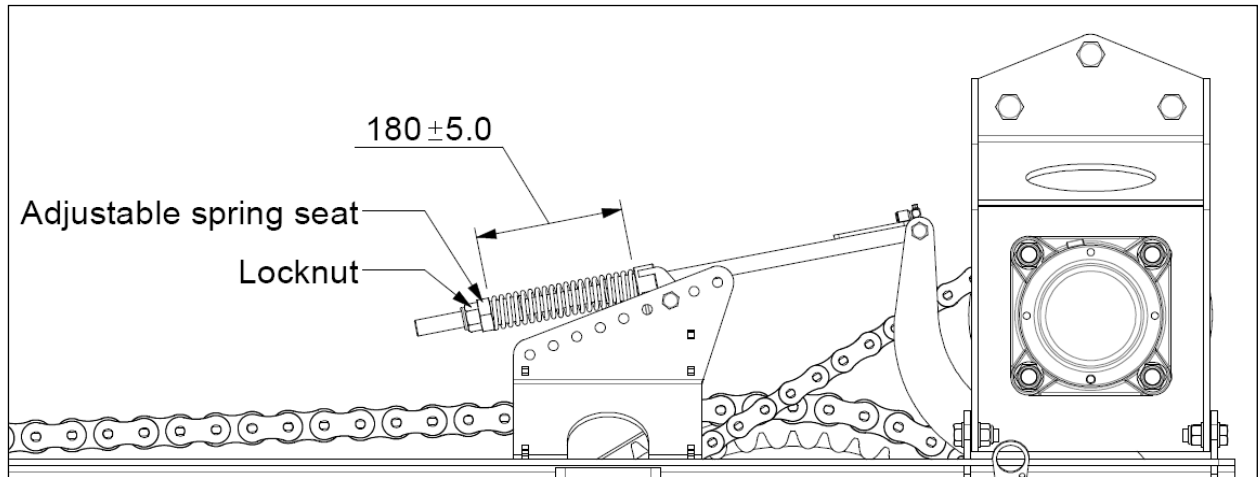


Figure 6: Auger chain tensioner spring setting

4. Setting tension on the rotor chain

The preload tension on this chain can be set using the adjuster pivot arm mechanism on the left side of the machine directly below the auger shaft (adjuster “D” in Figure 1 and Figure 7). To access this mechanism, open the left cover. Open the nut from the M16 fixing bolt and using a spring clamp or a lever bar compress the spring and remove the bolt. Using the same method as before now compress the spring to approx. **255 mm**. Ensuring that the spring is seated correctly, replace the M16 bolt and nut in the appropriate position and tighten.

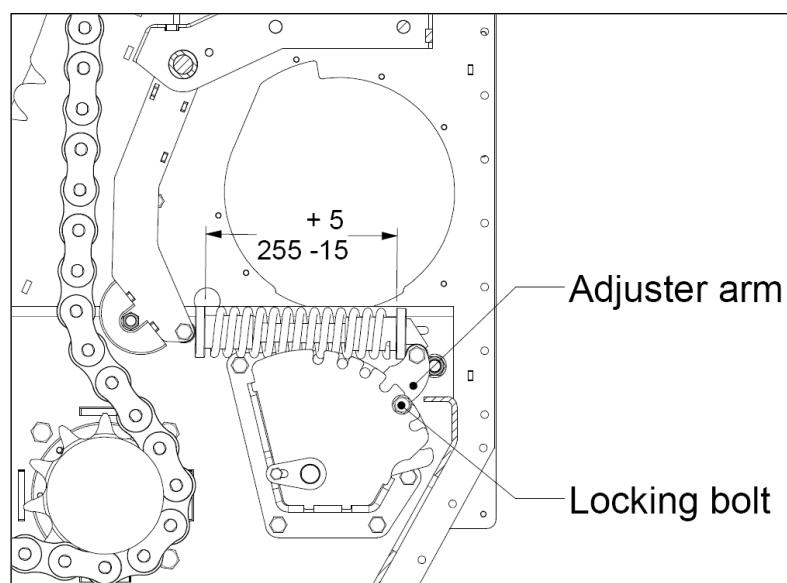


Figure 7: Rotor chain tensioner spring setting

It is recommended to check the tension weekly in the first few weeks of operation, as the chain, sprockets and tensioner “beds in” and may need to be adjusted



WARNING:

Larger drive chains exceed manual handling limits. If removing or refitting always use suitable lifting equipment.

Primary drive chain (540 RPM input)	15 kg
Primary drive chain (1000 RPM input)	23 kg
Secondary drive chain	42 kg
Rotor drive chain	141 kg
Auger drive chain	15 kg

1.6 Greasing

The KEENAN MechFiber400+ is fitted with a central greasing manifold as standard, located at the left side of the front cover. It allows greasing of all the inaccessible grease points of the drive system of the machine from that on location. The manifold groups pivot points 20, 24, 25, 26, 27, 28, 29, 30, 31, 32, 33 and 34 together, large bearing points 3, 4, 5, 6, 7 and 9 together, medium bearings grease points 1 and 2 together and small bearing points 11 and 12 together.

An instruction decal is fitted above the central greasing manifold on the front cover detailing the greasing interval (40 hours) and the amount of grease to be applied to each point (see Figure 9). All other bearings and pivot points not serviced by this manifold should receive 3cc (5g/0.175oz) of grease at the same 40-hour intervals.

- Bearings** - Each week (every 40 hours) apply grease to the 12 main bearings. These are as follows:

Grease point 1	Input shaft bearing (front) (see Figure 10)
Grease point 2	Input shaft bearing (rear) (see Figure 10)
Grease point 3	Primary idler shaft bearing (front) (see Figure 10)
Grease point 4	Primary idler shaft bearing (rear) (see Figure 10)
Grease point 5	Secondary idler shaft bearing (front) (see Figure 10)
Grease point 6	Secondary idler shaft bearing (rear) (see Figure 10)
Grease point 7	Rotor bearing (front) (see Figure 10)
Grease point 8	Rotor bearing (rear) (see Figure 11)
Grease point 9	Auger bearing (front) (see Figure 10)
Grease point 10	Auger bearing (rear) (see Figure 11)
Grease point 11	Primary drive chain tensioner sprocket bearing (see Figure 10)
Grease point 12	Secondary drive chain tensioner sprocket bearing (see Figure 10)

1. **Pivot pins** - Each week (or every 40 hours) apply grease to the following pivot points also:

Grease point 13	Drawbar centre pivot pin (see Figure 12)
Grease point 14	Drawbar spring to hanger pivot pin (see Figure 12)
Grease point 15	Drawbar spring hanger top pivot pin (see Figure 12)
Grease point 16	2 on each brake rod (8 in total) (see Figure 12)
Grease point 17	1 on each brake arm (4 in total) (see Figure 12)
Grease point 18	1 on each spring front pin (4 in total) (see Figure 12)
Grease point 19	1 on each spring centre pivot assembly (2 in total) (see Figure 12)
Grease point 20	VFC-door front ram pin (top) (see Figure 10)
Grease point 21	VFC-door front ram pin (lower) (see Figure 13)
Grease point 22	VFC-door rear ram pin (top) (see Figure 13)
Grease point 23	VFC-door rear ram pin (lower) (see Figure 13)
Grease point 24	Primary drive chain tensioner arm pivot pin (see Figure 10)
Grease point 25	Secondary drive chain tensioner arm pivot pin (see Figure 10)
Grease point 26	Rotor drive chain tensioner arm pivot pin (see Figure 10)
Grease point 27	Auger drive chain tensioner arm pivot pin (see Figure 10)
Grease point 28	Rotor drive chain adjuster arm pivot pin (see Figure 10)
Grease point 29	Rotor drive tensioner spring inner seat bush (see Figure 10)
Grease point 30	Rotor drive tensioner spring outer seat bush (see Figure 10)
Grease point 31	Rotor drive chain tensioner spring seat shaft (see Figure 10)
Grease point 32	Auger drive chain tensioner adjuster pivot bush (see Figure 10)
Grease point 33	Auger chain tensioner compression spring seat pivot bush (see Figure 10)
Grease point 34	Auger chain tensioner compression spring inner seat (see Figure 10)

2. **VFC-door** - Check the VFC-door is able to move freely each day and grease external slides as appropriate.
3. **PTO drive shaft** - Refer to PTO operators manual for greasing instructions and recommendations

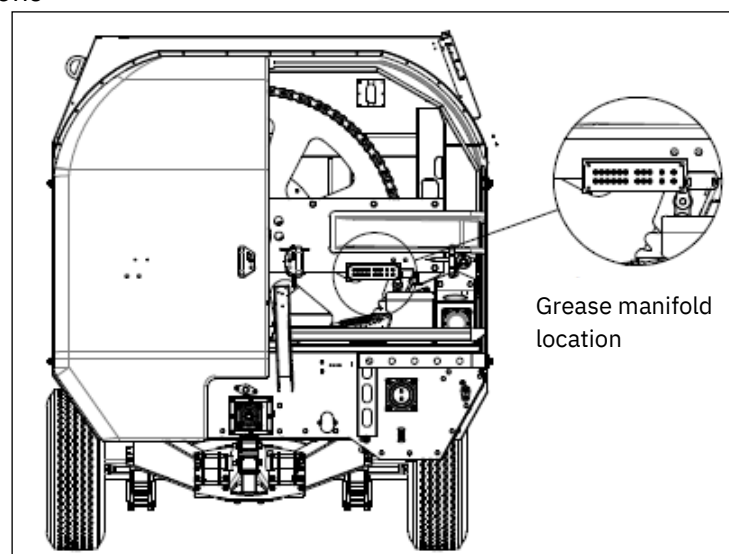


Figure 8: Drive system central greasing manifold

Apply grease at 40-hour intervals			
Pivot points	Large bearings	Medium bearings	Small bearings
3 pumps/3 cc	4 pumps/4 cc	3 pumps/3 cc	1 pump/1 cc
5 grams/0.175 oz	7.2 grams/0.26 oz	5 grams/0.175 oz	2 grams/0.035 oz
Note: 1 pump/stroke of manual grease gun typically produces 1 cc of grease			

Figure 9: Central greasing application detail

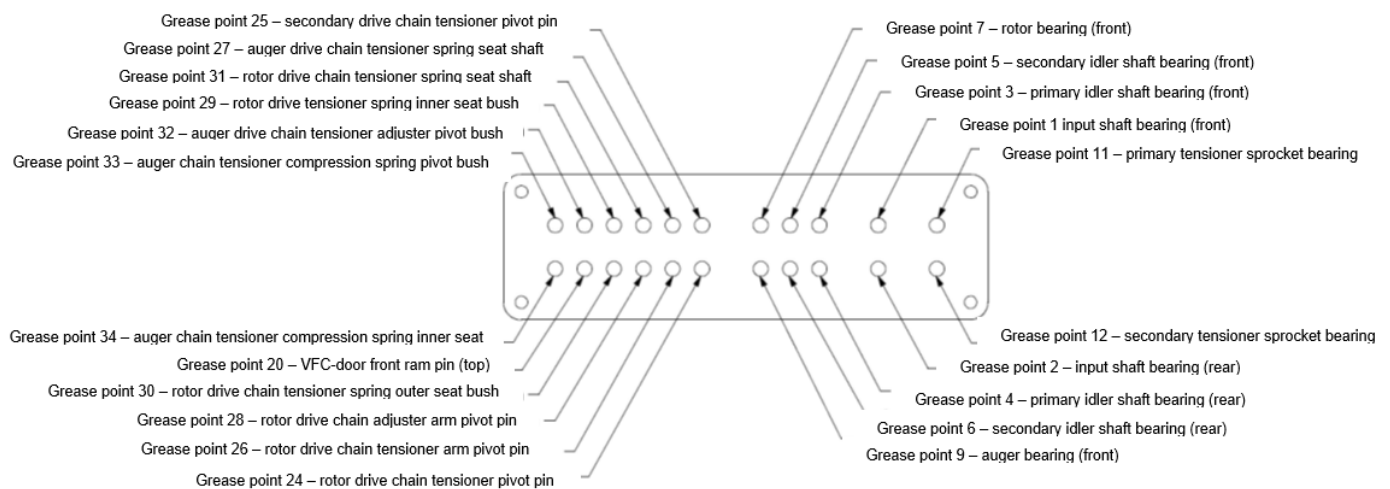


Figure 10: Central greasing manifold ports

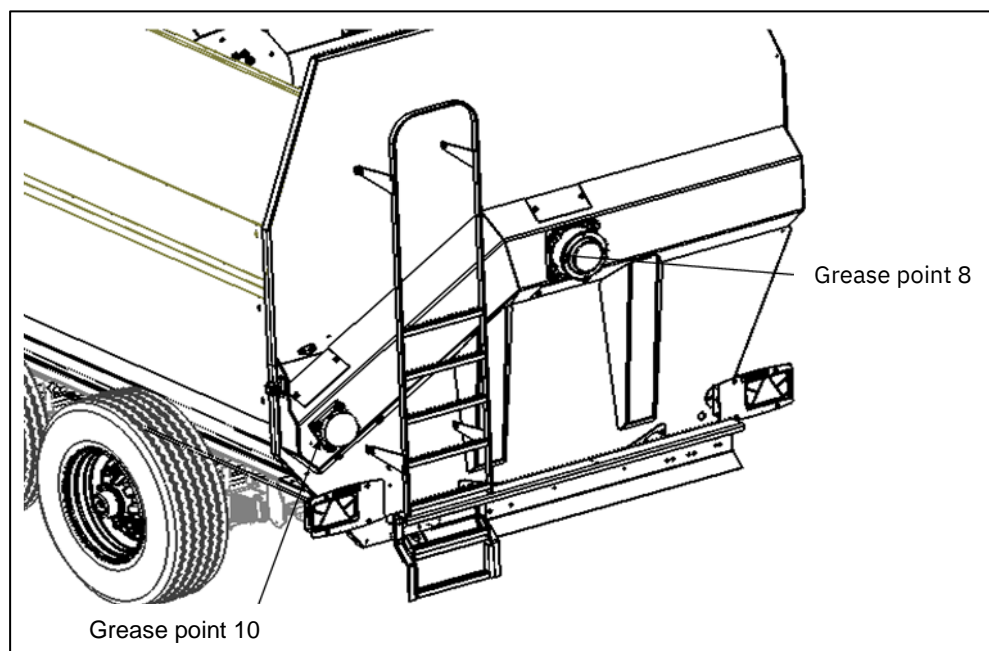


Figure 11: Rear greasing point

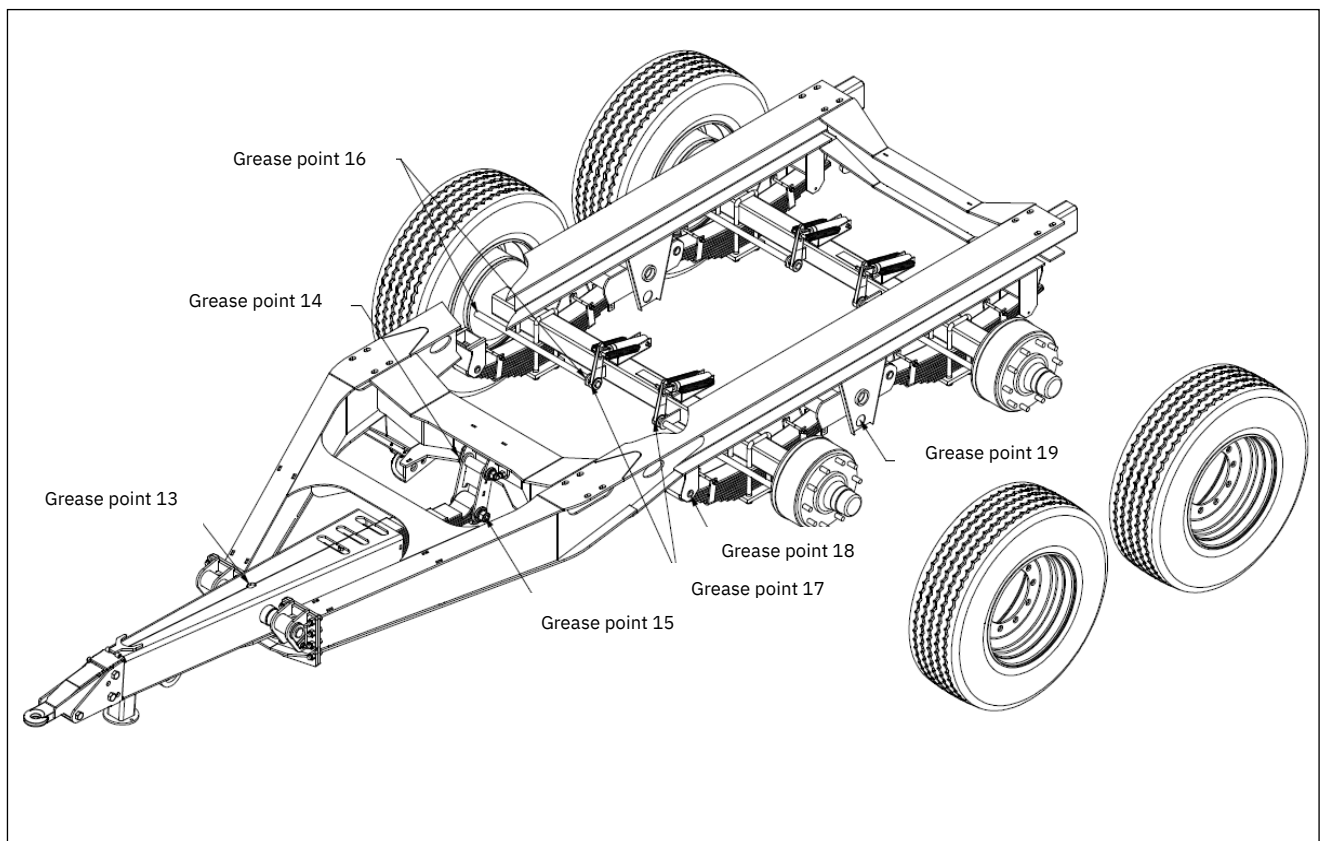


Figure 12: Chassis greasing points

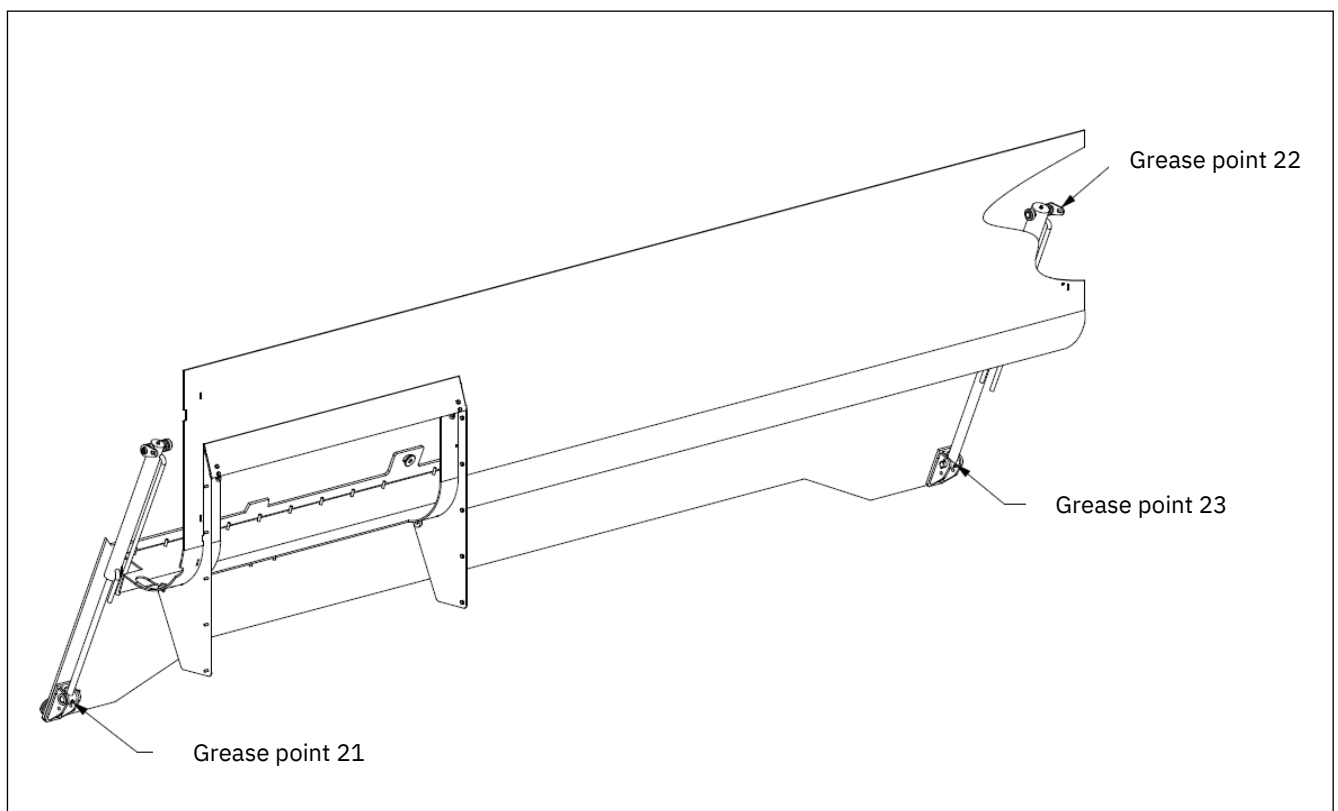


Figure 13: VFC-door greasing points

1.7 Blade maintenance

Blade sharpening and/or replacement: It is recommended that only KEENAN-trained and/or qualified maintenance personnel should perform this task.

Blades need to be kept sharp. Blunt blades will increase power requirements. Sharpening must be done without taking the temper from the blades (i.e., without overheating). Blades can be sharpened many times, but when they reach the point where this is no longer practical, they must be replaced.

1.8 Shear bolts

The following are the recommended shear bolts to be used with the KEENAN MechFiber400+.

Machine type	PTO shaft	Shear bolt	Colour code
540 RPM input	T80 and V80	M12 x 70 x 5.6	Blue
1000 RPM input	T60 and V60	M10 x 60 x 4.6	Green

Table 3: Shear bolt size and grade



CAUTION:

Failure to use the correct grade of shear bolt can result in overload failure of the machine and will invalidate your warranty.

1.9 Nuts and bolts

1. After the first day, and regularly thereafter, inspect wheel nuts and tandem-axle U-bolts (where fitted).
2. After the first week, and each week thereafter, check all nuts and bolts, including bearing nuts, for tightness.

General torque

Stud/bolt type	FT/LB	N.M
M22	335	450
M20	260	350
M18	200	270

Table 4: General torque for wheel studs

U-bolt diameter (mm)	Tightening torque (Nm)
18	230
22	450
24	500
27	600

Table 5: Recommended torque for U-bolts for tandem axles (where fitted)

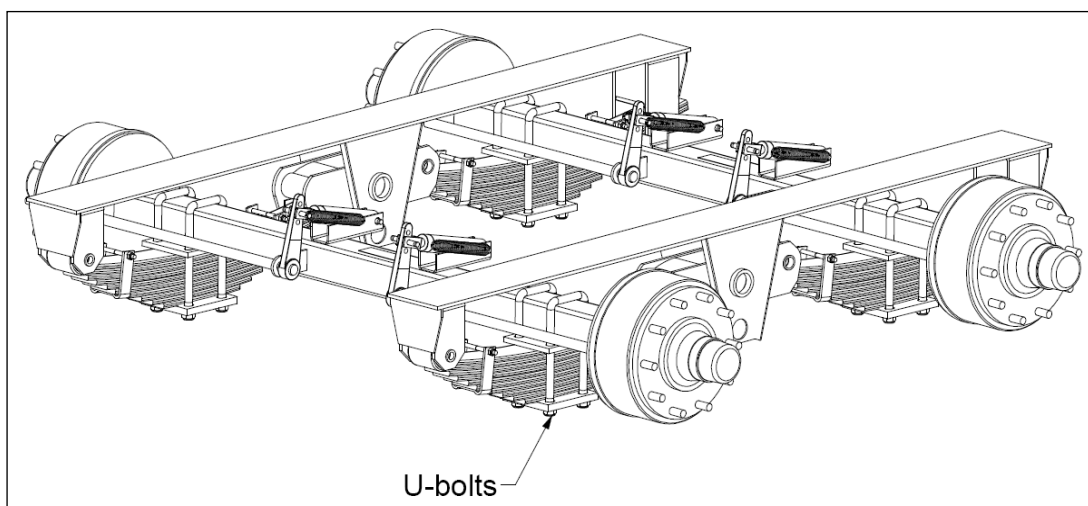


Figure 14: U-bolt position on bogie axle

1.10 Tyres

1. Each week, check the tyres for wear and damage.
2. Each week, check the tyre pressure. Optimal tyre pressures are shown in Table 6.

This information is given as guidance. If in doubt, please contact your KEENAN service partner.



WARNING:

When refitting and re-inflating tyre/wheel assemblies, a safety cage should be used to prevent possible injury. Incorrectly fitted tyres are dangerous. Please make sure tyre repairs are carried out by experienced tyre fitters.

Type	Bar	PSI
385/65 R 22.5	9.0	132
385/55 R 22.5	9.0	132
445/45 R 19.5	9.0	132

Table 6: Tyre pressure

1.11 Hitch height adjustment

The hitches of the KEENAN MechFiber400+ have been designed to allow for a number of various hitch height options with the same components used. The hitch height is normally selected for the application and set at the factory per the options below.

The main standard hitch assembly is a bolt-on assembly, and once the main setting is completed at the factory, it may also be adjusted on-farm if necessary.

Note:

1: Care must be taken when adjusting the hitch height so that there is adequate PTO clearance and that there is enough ground clearance below the stand.

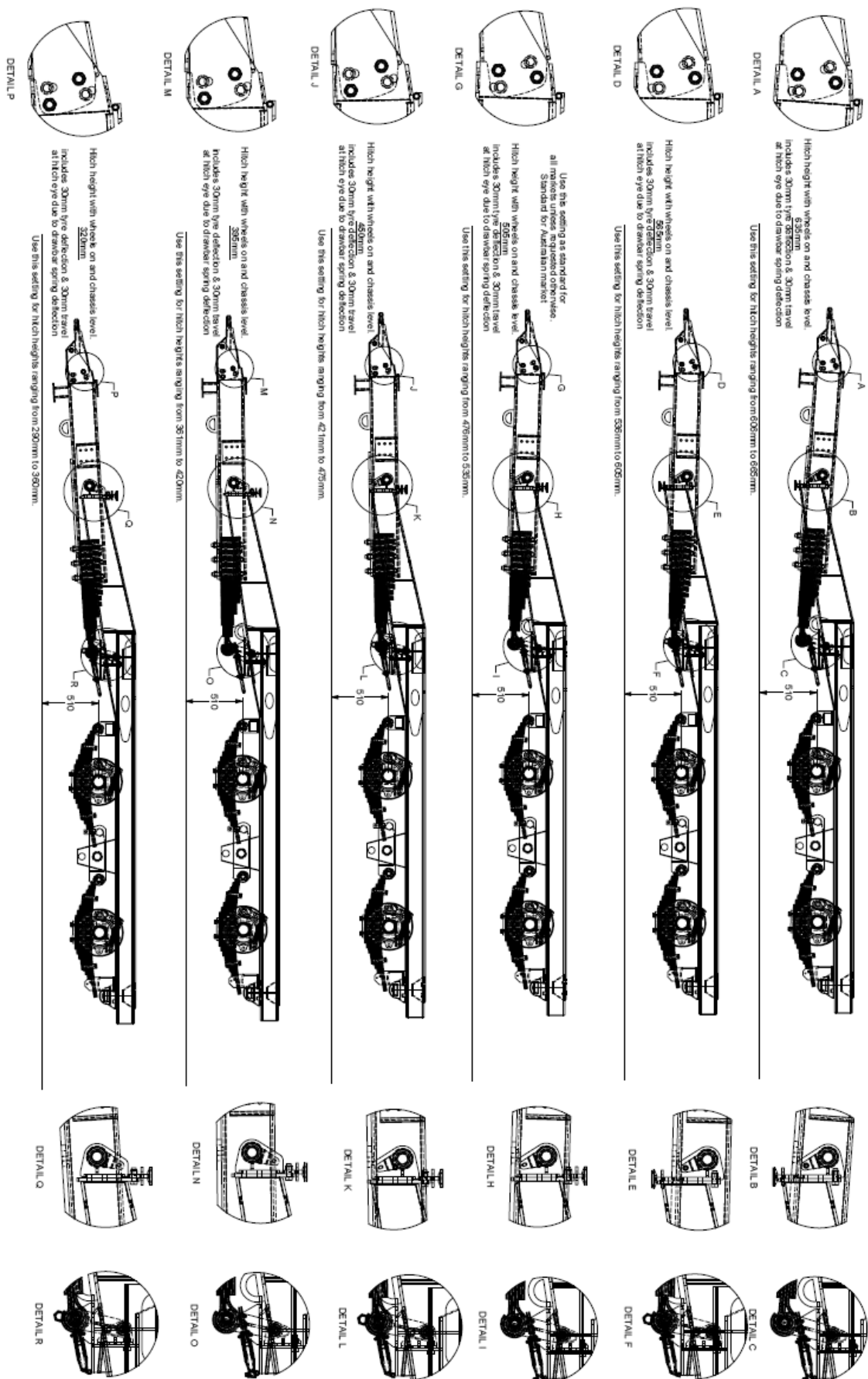


Figure 15a: Hitch height settings on 385/65R 22.5 wheels/tyres

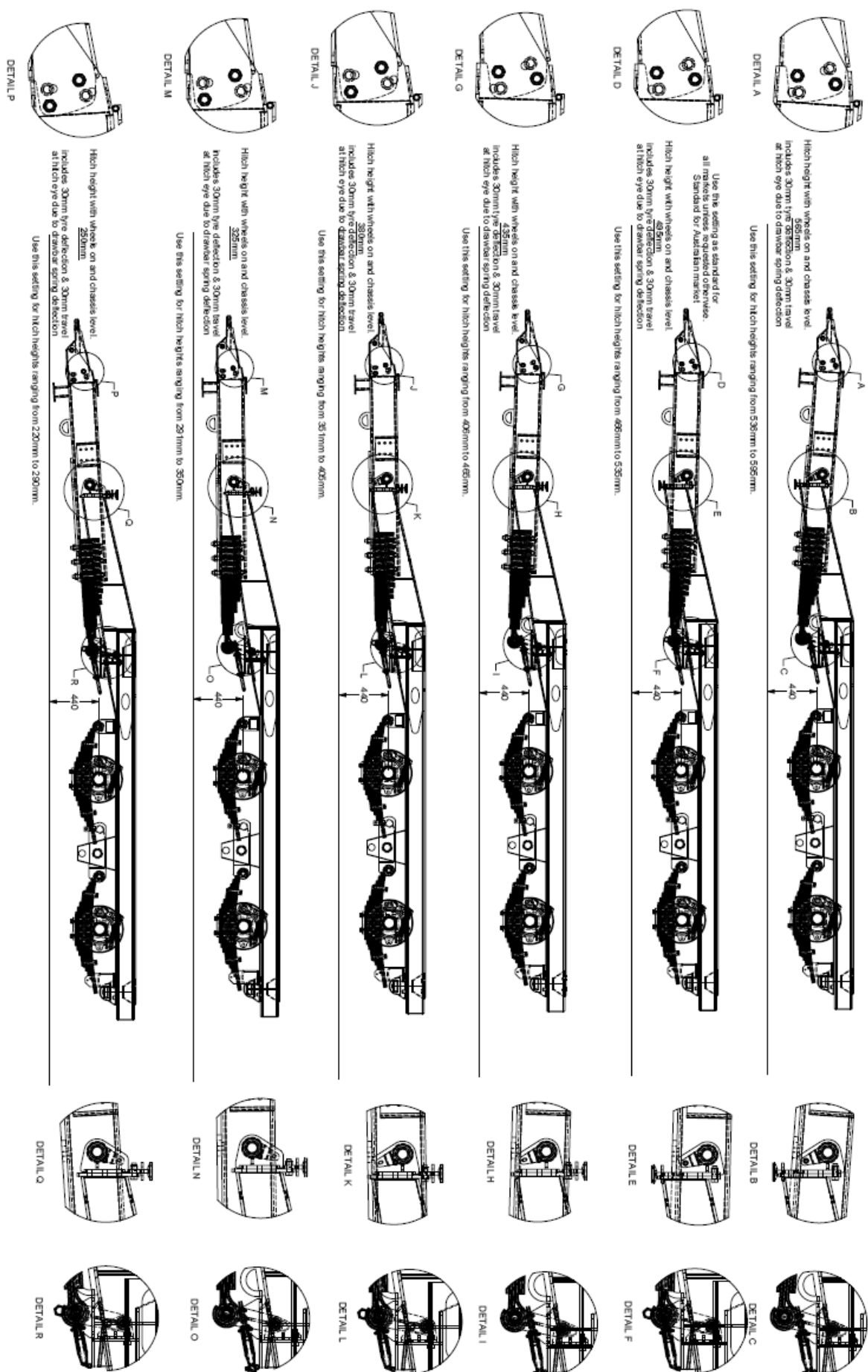


Figure 15c: Hitch height settings on 445/45R 19.5 wheels/tyres

1.12 Specifications

Model		MechFiber400+	
		Non-Bale Handler	Bale handler
Unladen	kgs	13,750	14,750
	lbs.	30,313	32,518
Payload	kgs	10,000*	
	lbs.	20,046*	
Gross	kgs	23,750	24,750
	lbs.	52,359	54,564

Table 7: Machine weights

1. Weights may vary depending on the exact specifications.

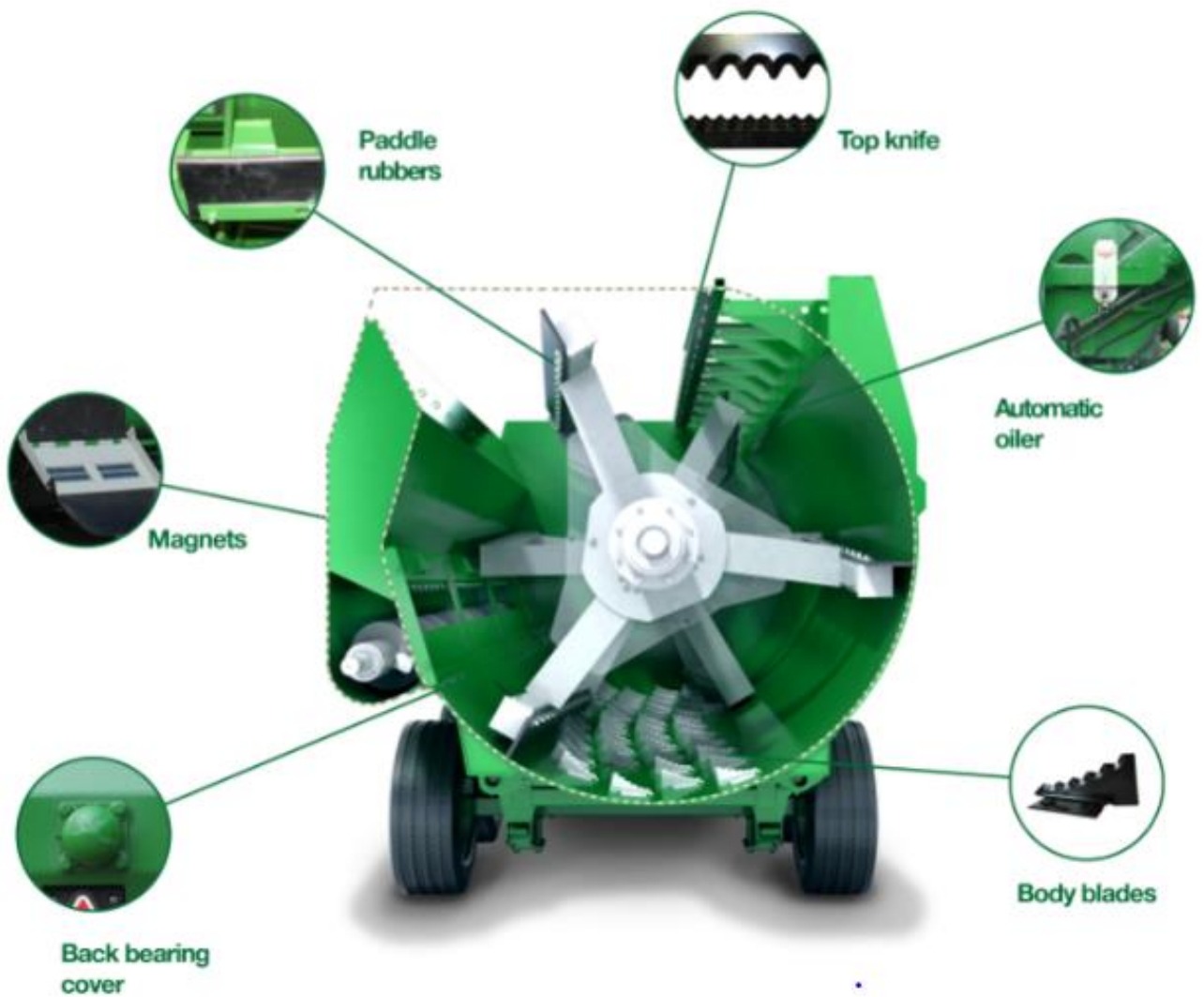
1.13 Soda grain

Additional safety instructions and warnings are available and covered in the soda grain leaflet, which should be read carefully before soda-treating grain. When you are finished treating the grain, clean out any remaining material in the mixing and/or auger chamber by loading in 200–300 kg of silage or 50 kg of straw, and allow the machine to mix before unloading in the normal manner.

**Note that when mixing soda grain, the maximum gross load that can be mixed in the KEENAN MechFiber400+ is 8,000 kg/17,600 lbs.*

The soda-grain process can be completed using a KEENAN mixer, but before completing treatment on your farm, make sure you are adhering to the local animal feed legislation and health and safety guidelines involving the treatment of grain.

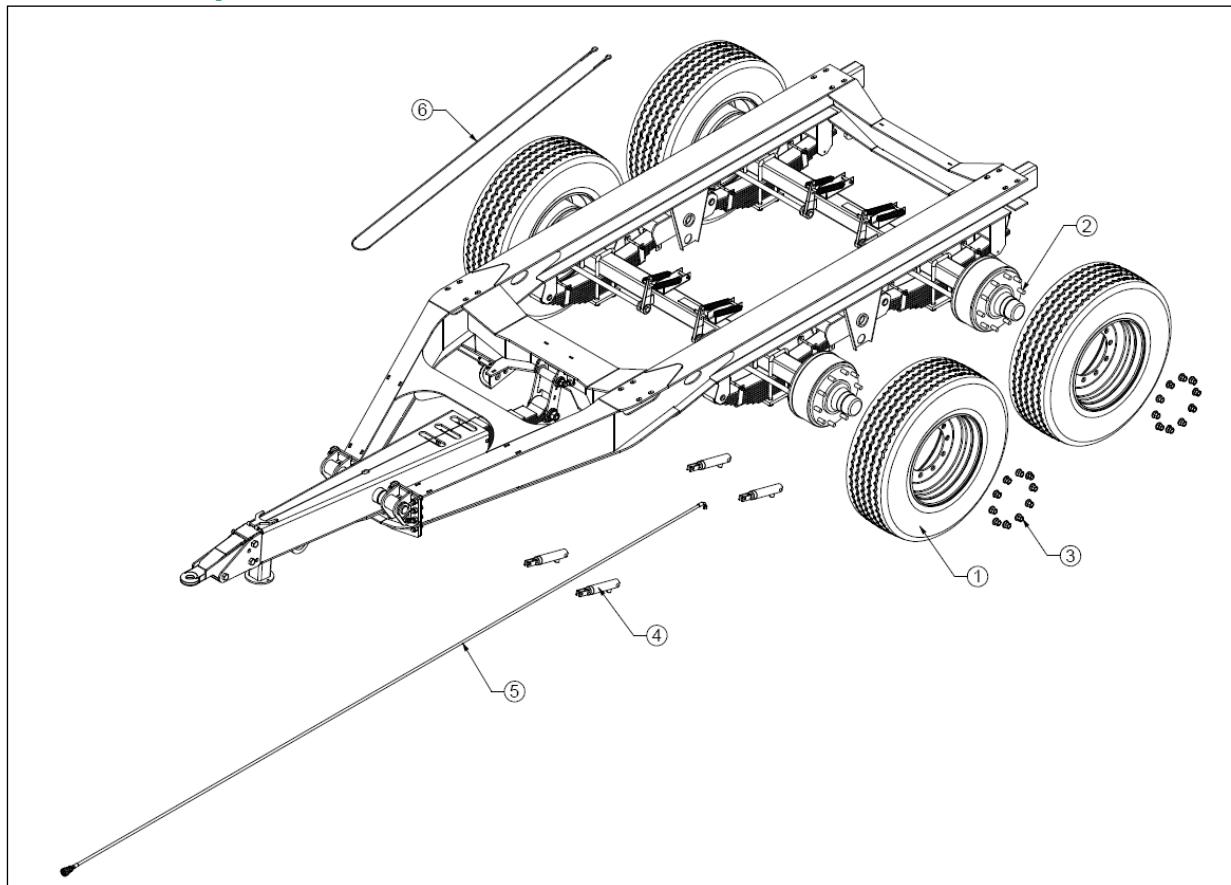
Part II: Parts list



List of abbreviations:

P/N	Part number
Qty	Quantity
ID	Inner diameter
OD	Outer diameter
N/A	Not applicable
c/w	Complete with

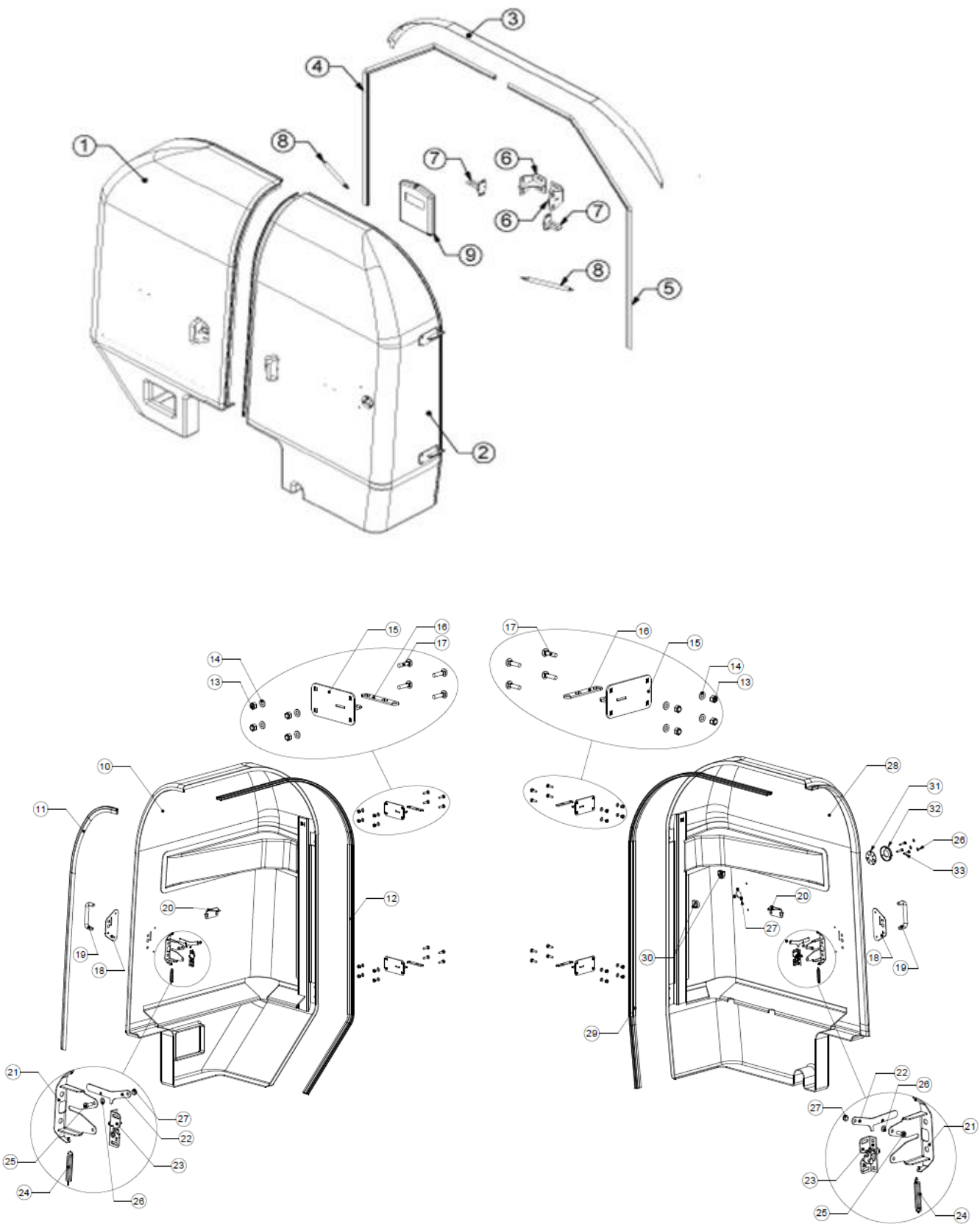
2.1 Chassis parts



Item	P/N	Qty	Description
1	700477	4	385/65 R222.5 wheel and tyre (standard)
	702366	4	385/55 R22.5 wheel and tyre (optional)
	703860	4	445/45 R19.5 wheel and tyre (optional)
2	700307	40	M22 wheel stud
3	700306	40	M22 wheel nut
4	700832	4	Hydraulic brake ram
5	702107	1	Hydraulic hose – tractor to brake ram
6	702034	1	4 mm diameter handbrake cable
Optional	P/N	Qty	Description
	703768	1	Double acting hydraulic jack with fittings
	FP280-001-0162	1	Heavy duty hydraulic jack mounting bracket
	FP280-001-0222	1	Clevis hitch eye assembly
	FP280-001-0284	1	Swivel hitch eye assembly
	FP280-001-0283	1	Spoon hitch eye assembly
	704154	1	Towing eye bush, 32.5 mm ID
	702324	1	Towing eye bush, 30 mm ID

Table 8: Chassis

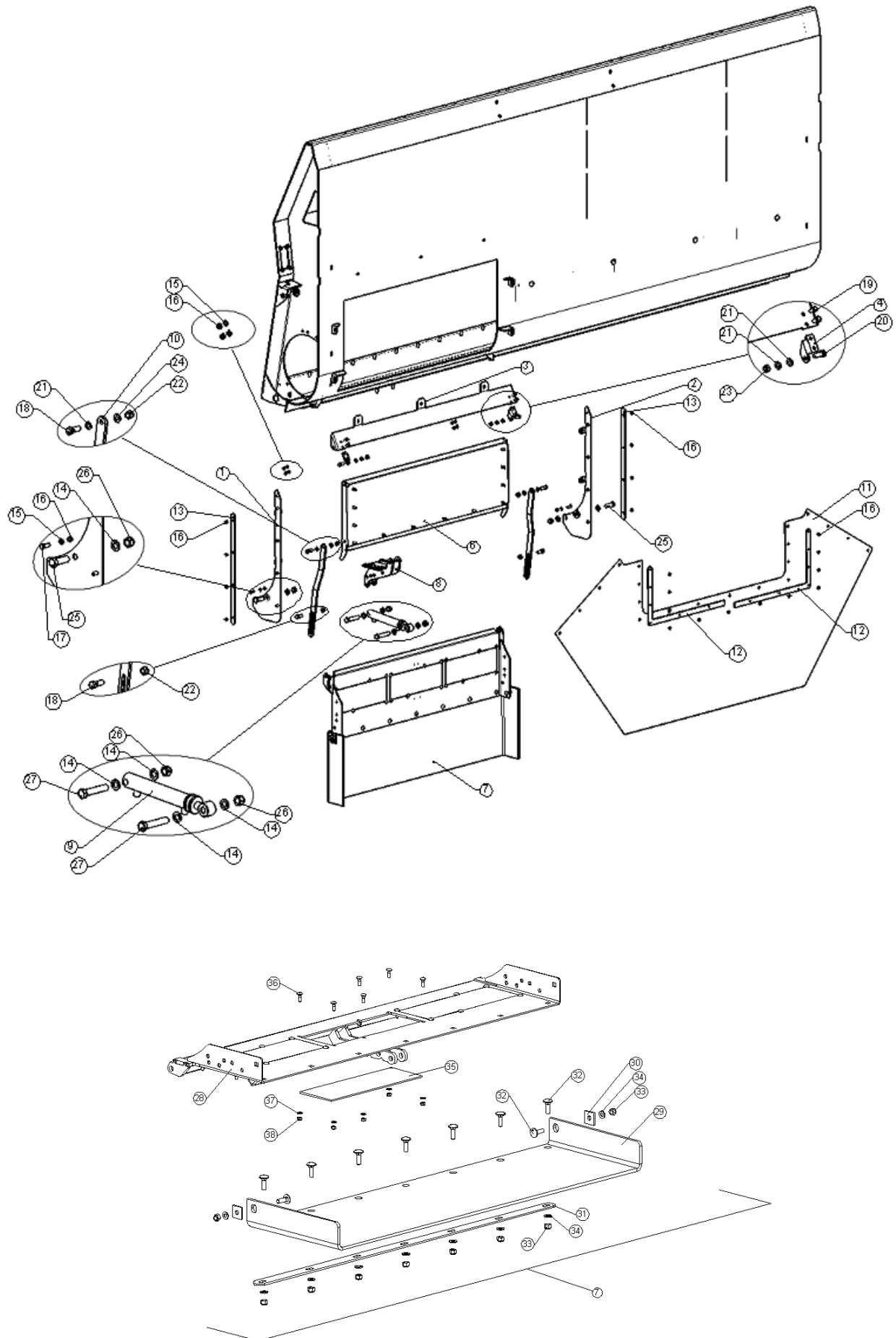
2.2 Front cover parts



Item	P/N	Qty	Description
1	FP280-038-0001	1	Right side cover assembly (black)
2	FP280-037-0284	1	Left side cover assembly (black)
3	FP280-002-0337	1	MF400 front panel rain channel
4	-		Not required on this Model
5	-		Not required on this Model
6	FP380-038-0022	2	Door latch bracket
7	FP200-048-0244	2	Camlock striker plate assembly
8	706101	2	Gas strut CA102911 (600 mm open, 200 N, 250 stroke)
9	706086	1	A4 flat document box
10	FP280-038-0003	1	MF400 front cover (right side)
11	FP280-038-0008	1	MF400 front cover inner seal (L = 2,222 mm)
12	FP280-038-0005	1	MF400 front cover outer seal — RH (L = 3,825 mm)
13	700241	16	M10 locknut
14	700729	16	M10 flat washer
15	FP200-037-0064	4	Front cover hinge mount assembly
16	FP380-037-0057	4	Hinge adjustment plate
17	700251	16	M10 x 40 cuphead bolt
18	FP200-037-0095	2	Camlock outer plate
19	701363	2	Handle
20	FP200-037-0113	2	Gas strut outer mounting bracket
21	FP200-037-0093	2	Camlock mounting bracket
22	FP200-037-0094	2	Secondary fail-safe latch
23	706015	2	Fibreglass door camlock unit
24	701277	2	3" spring
25	700208	2	M8 x 20-mm setscrew
26	700736	8	M8 flat washer
27	700223	5	M8 locknut
28	FP280-037-0286	1	MF400 front cover (left side)
29	FP280-037-0288	1	MF400 front cover outer seal — LH (L = 3,542 mm)
30	705826	3	Adaptaflex conduit clip 28 mm
31	FP200-037-0114	1	Weighing cable gland seal (7-hole)
31a	FP200-037-0149	1	Weighing cable gland seal (1-hole)
32	FP200-037-0115	1	Weighing cable gland seal outer retainer
33	700214	3	M8 x 40-mm setscrew (8.8 grade)

Table 9: Front covers

2.3 Standard feed-out tray parts



Item:	P/N:	Qty:	Description:
1	FP160-006-0429	1	Feed-out shroud front side plate assembly
2	FP160-006-0430	1	Feed-out shroud rear side plate assembly
3	FP160-006-0432	1	Feed-out shroud top plate
4	FP160-006-0088	1	Hinge bracket, feed-out door, right-hand side
5	FP160-006-0087	1	Hinge bracket, feed-out door, left-hand side
6	FP160-006-0090	1	Feed-out door assembly
7	FP160-006-0123	1	Tray assembly with rubber extension (standard)
8	FP160-006-0044	1	Feed-out tray ram mounting plate assembly
9	703591	1	6" stroke hydraulic ram (KEEN-63)
10	FP080-006-0012	2	Feed-out door link arm
11	FP160-006-0072	1	Feed-out rubber shroud, rubber curtain
12	FP300-006-0095	2	Feed-out door shroud retainer
13	FP300-006-0096	2	Feed-out door shroud side retainer
14	700732	7	M16 flat washer
15	700736	6	M8 flat washer
16	700223	26	M8 nylock nut
17	700210	2	M8 x 25 setscrew (HT)
18	700249	4	M12 x 35 setscrew
19	700208	4	M8 x 20 setscrew
20	702111	2	M10 x 30 setscrew
21	700729	6	M10 flat washer
22	700266	4	M12 locknut
23	700241	2	M10 locknut
24	700730	2	M12 flat washer
25	700275	2	M16 x 50 bolt
26	700283	4	M16 locknut
27	700281	2	M16 x 90 bolt
28	FP160-006-0124	1	Feed-out tray assembly (standard)
29	701403	1	Feed-out rubber extension (standard)
30	EF106-79	2	Feed-out tray side rubber retainer
31	FP160-006-0224	1	Rubber retainer
32	705405	9	M12 x 40 cuphead bolt
33	700266	9	M12 locknut
34	700730	9	M12 flat washer
35	FP160-006-0270	3	Tray magnet hole blanking plate (standard)
35a	701366	3	Magnet plate (OE)
36	702256	18	M8 x 25 cuphead bolt
37	700736	18	M8 flat washer
38	700223	18	M8 nylock nut

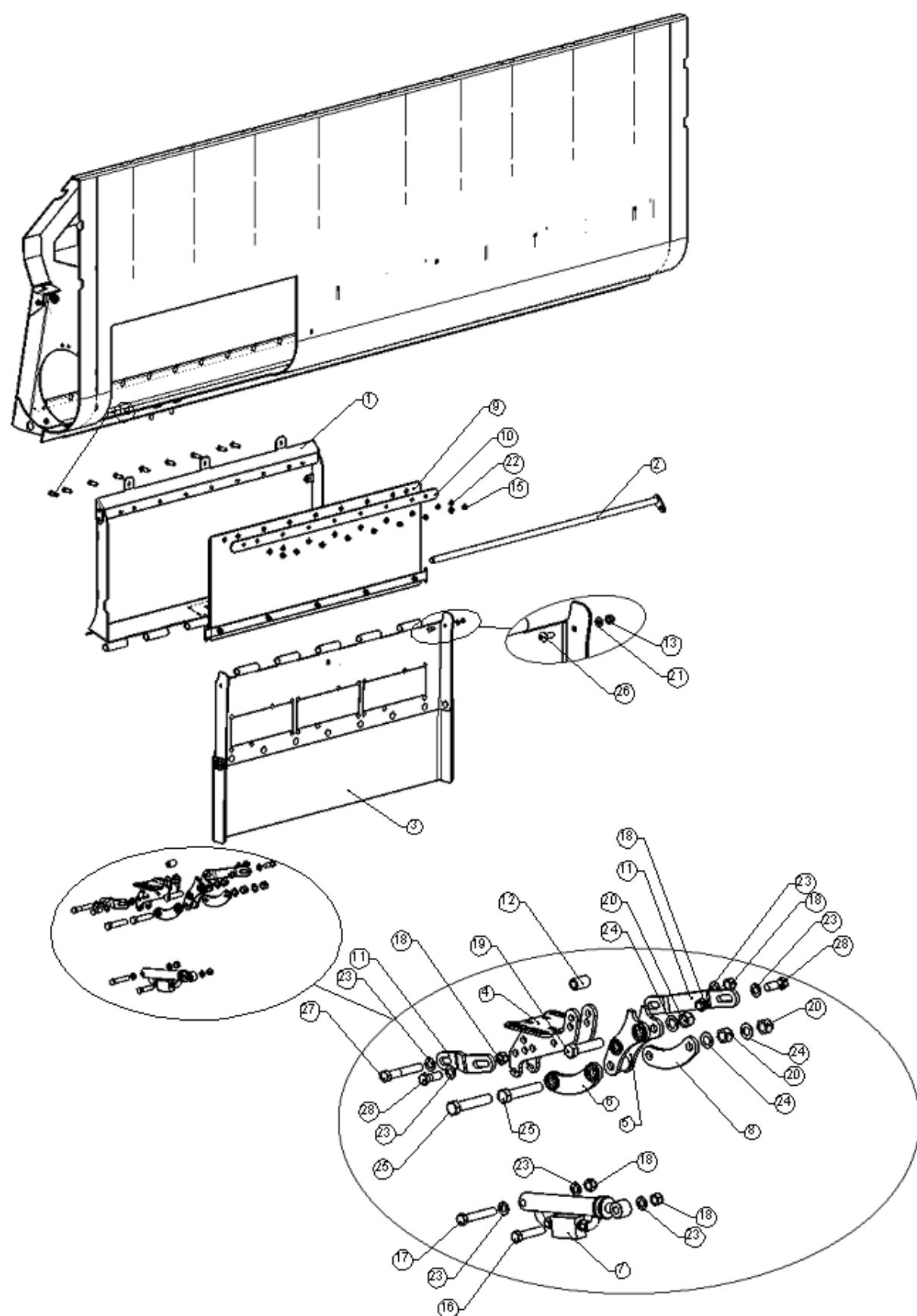
Table 10: Feed-out tray details

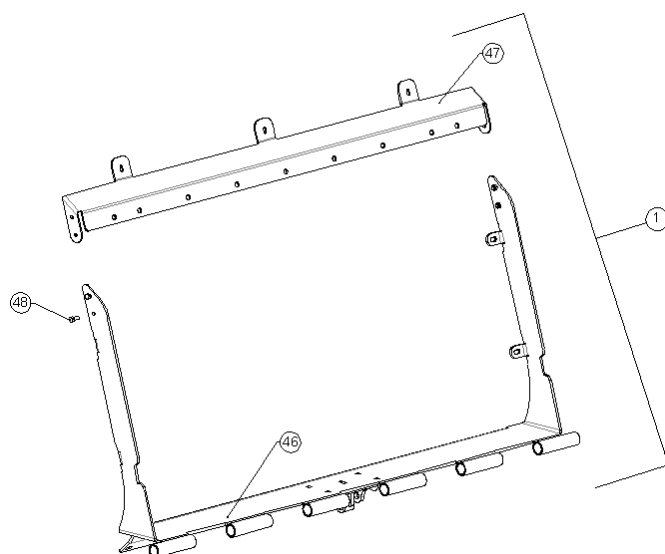
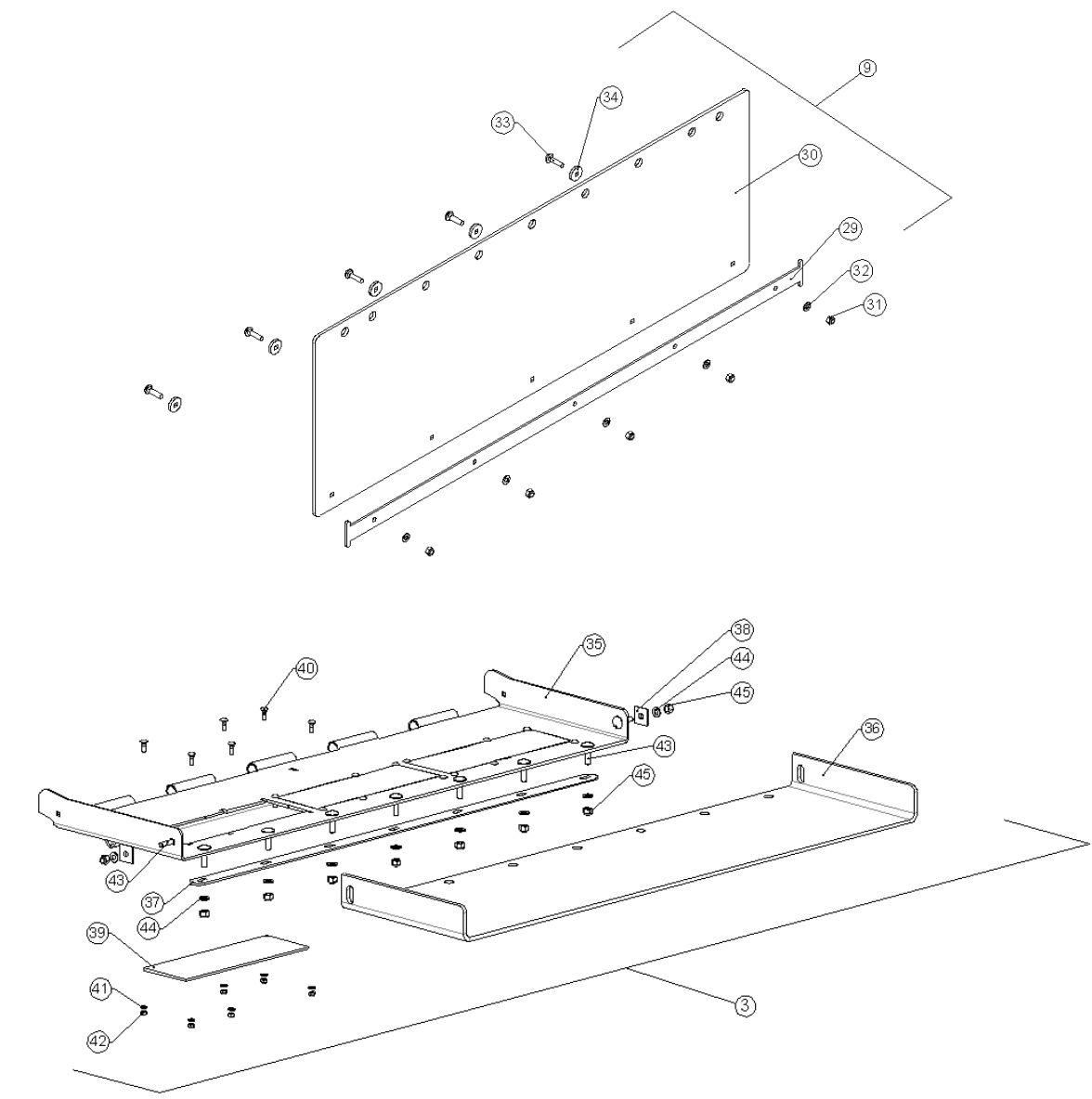
Note:

Complete standard feed-out kit P/N FP160-006-0428

Feed-out tray can be supplied with the magnet assembly P/N FP160-006-0071

2.4 Fold-down tray parts (optional extra)





Item:	P/N:	Qty:	Description:
1	FP160-006-0417	1	Fold-down tray shelf assembly
2	FP170-006-0182	1	Fold-down tray hinge bar assembly
3	FP170-006-0191	1	Fold-down tray assembly and rubber
4	FP160-006-0044	1	Fold-down tray mounting plate assembly
5	FP170-006-0162	1	Fold-down tray inner link arm assembly
6	FP200-006-0340	1	Fold-down tray outer link arm assembly
7	705268	1	6" ram assembly with check valve (KEEN-63SP)
8	FP200-006-0332	1	Fold-down tray outer link arm — 127-mm centres
9	FP160-006-0427	1	Feed-out shroud rubber assembly
10	FP160-006-0061	1	Rubber retainer 1,400 mm wide
11	FP160-006-0420	2	Fold-down tray shelf to auger chamber tie plate
12	FP170-006-0156	1	Feed-out tray ram bracket spacer bush
13	700241	1	M10 lock nut
14	700250	9	M12 x 40 setscrew
15	700266	9	M12 lock nut
16	700280	1	M16 x 80 bolt
17	700268	1	M16 x 100 bolt
18	700283	5	M16 locknut
19	700302	1	M20 x 90 bolt HT
20	700305	3	M20 nylock nut
21	700729	1	M12 locknut
22	700730	18	M12 flat washer
23	700732	7	M16 flat washer
24	700733	3	M20 flat washer
25	701488	2	M20 x 110 bolt HT
26	700226	1	M10 x 30 cuphead bolt
27	700269	1	M16 x 110 bolt
28	700274	2	M16 x 45 bolt
29	FP170-006-0187	1	Feed-out shroud rubber lower retainer plate
30	FP160-006-0422	1	Feed-out shroud rubber
31	700241	5	M10 lock nut
32	700729	5	M10 flat washer
33	700251	5	M10 x 40 cuphead bolt
34	FP170-006-0188	5	Retainer plate washer
35	FP170-006-0178	1	Fold-down tray assembly
36	FP170-006-0186	1	Fold-down tray rubber extension
37	FP160-006-0224	1	Rubber retainer
38	EF106-79	2	Side rubber retainer plate
39	FP160-006-0272	3	Tray magnet hole blanking plate (standard)
39a	701366	3	Magnet plate (optional extra)
40	700212	18	M8 x 30 bolt
41	700736	18	M8 flat washer
42	700223	18	M8 nylock nut
43	702500	9	M12 x 45 cuphead bolt
44	700730	9	M12 flat washer
45	700266	9	M12 lock nut
46	FP160-006-0418	1	Fold-down tray shelf assembly
47	FP160-006-0421	1	Fold-down tray shelf top plate
48	700208	4	M8 x 20 setscrew
49	700223	4	M8 nylock nut

Table 11: Fold-down-tray parts

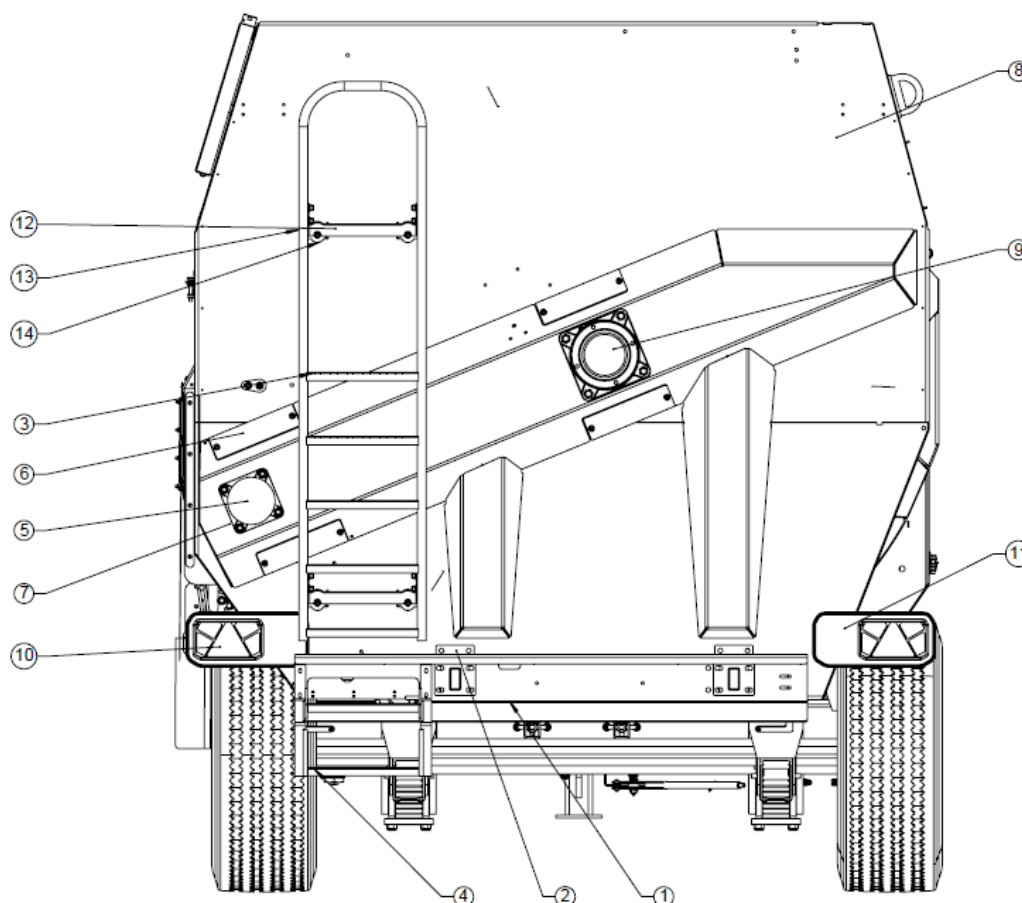
Note:

Complete fold-down tray kit (standard): P/N FP160-006-0416

Complete fold-down tray kit (OE-100): P/N FP160-006-0423

Fold-down tray can be supplied with the magnet assembly P/N FP170-006-0177.

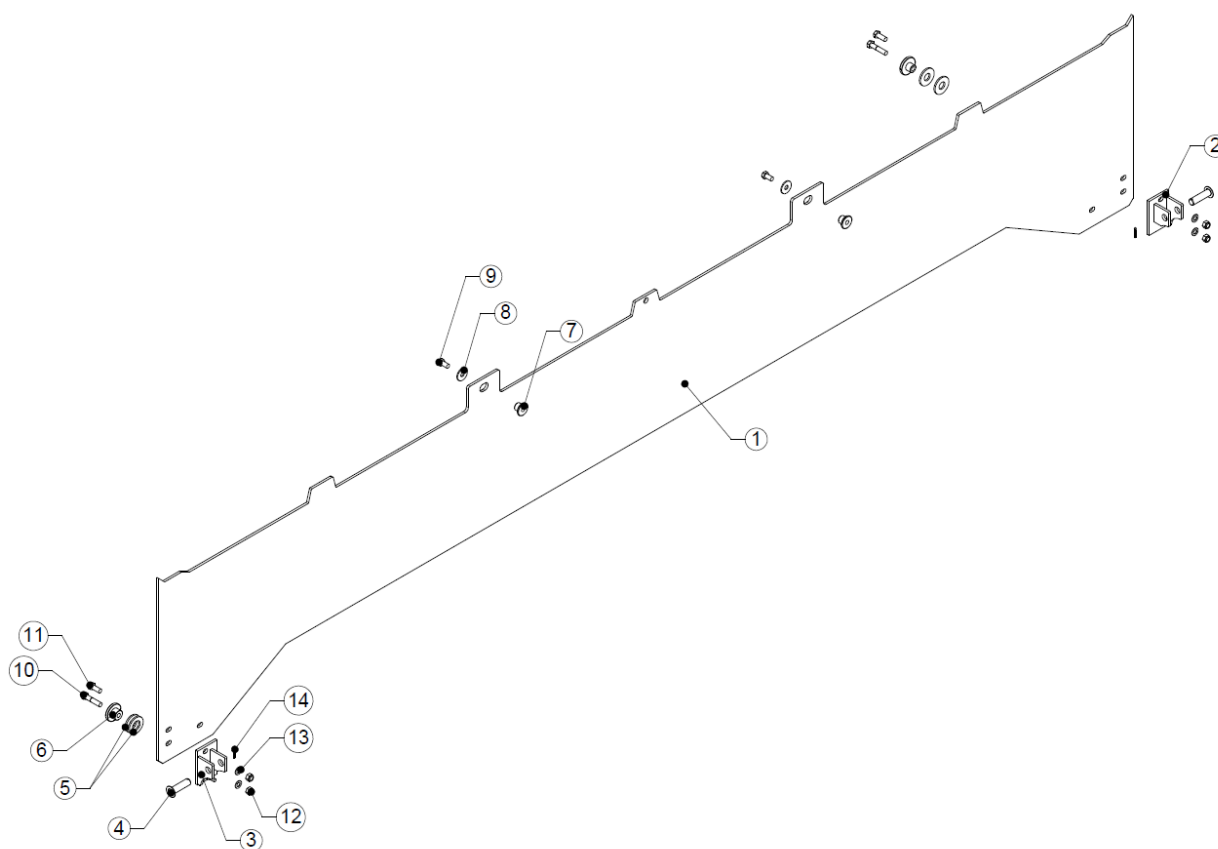
2.5 Rear parts



Item:	P/N:	Qty:	Description:
1	FP280-003-101	1	Bumper bar
2	FP280-003-0044	1	Bumper bar mounting bracket LH
2a	FP280-003-0048	1	Bumper bar mounting bracket RH
3	FP280-013-0020	1	Viewing ladder (tubular frame)
4	FP280-013-007	1	Viewing ladder (lower section)
5	701273	2	Bearing cover
6	FP160-003-0015	2	Access panel
7	700842	1	UCF X14, 70-mm bearing, cast housing
8	-	1	Machine body (reference)
9	FP280-007-0085	2	Rotor bearing assembly
10	FP200-003-0261	1	Rear LED light cluster (left hand side)
11	FP200-003-0262	1	Rear LED light cluster (right hand side)
12	FP200-013-0025	2	Ladder arm assembly
13	FP200-013-0015	8	Ladder pivot bush
14	704416	4	Rubber buffer

Table 12: Rear parts

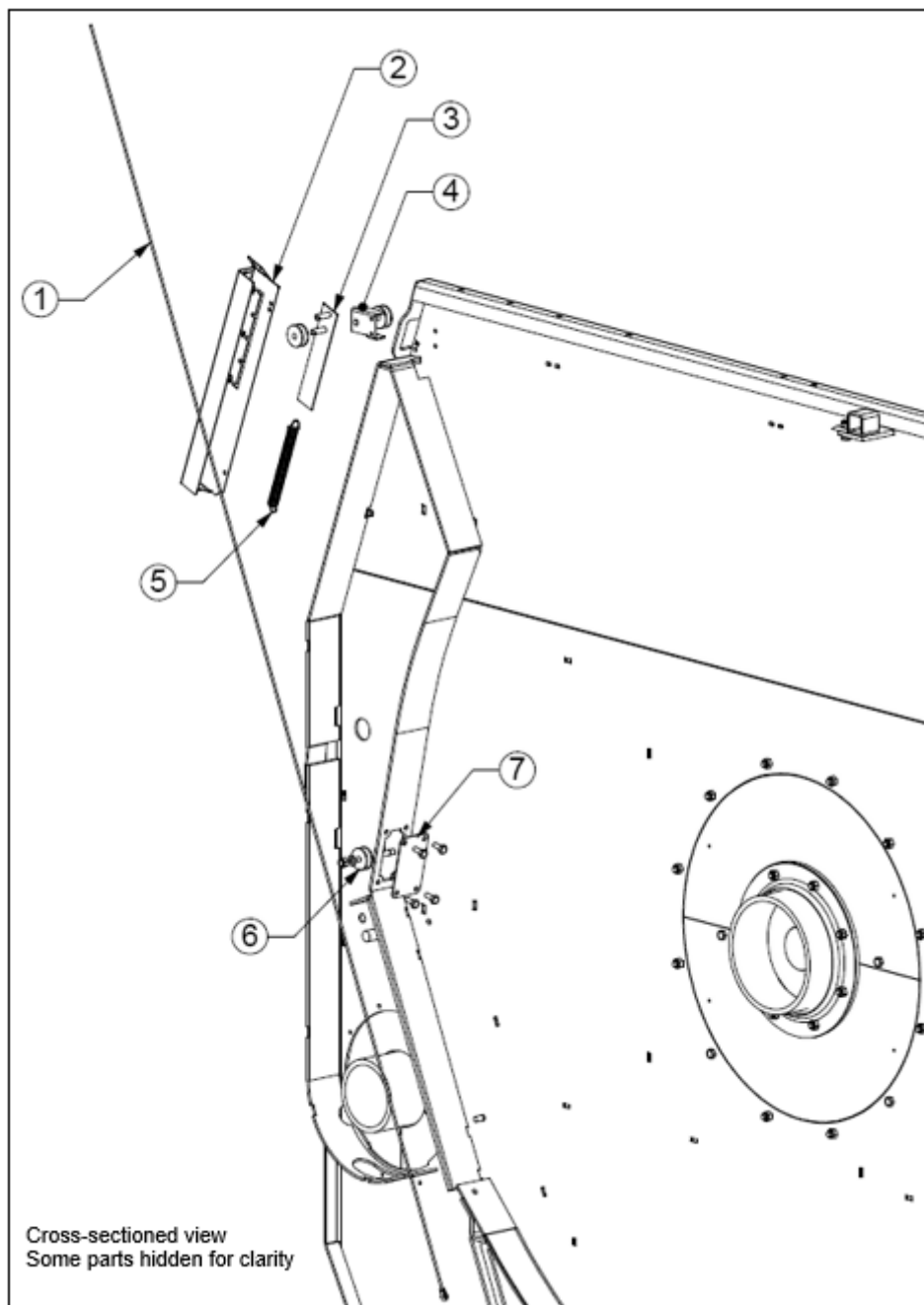
2.6 VFC-door parts



Item:	P/N:	Qty:	Description:
1	FP280-010-001	1	VFC-door plate
2	FP280-010-0013	1	VFC-door rear ram bracket assembly
3	FP280-010-0013	1	VFC-door rear ram bracket assembly
4	701591	2	VFC-door lower ram pin assembly
5	FP160-010-0015	4	VFC-door front end guide collar wear washer
6	FP160-010-0014	2	VFC-door front end guide collar
7	701504	2	VFC-door centre stepped collar
8	702453	2	17-mm ID x 50-mm OD x 4-mm thick flat washer
9	701519	2	M16 x 30-mm setscrew
10	700279	2	M16 x 75-mm bolt
11	703148	2	M16 x 40-mm setscrew
12	700283	4	M16 locknut
13	700732	4	M16 flat washer
14	701111	2	Split pin — 3/16" diameter x 1.5"

Table 13: VFC-door parts

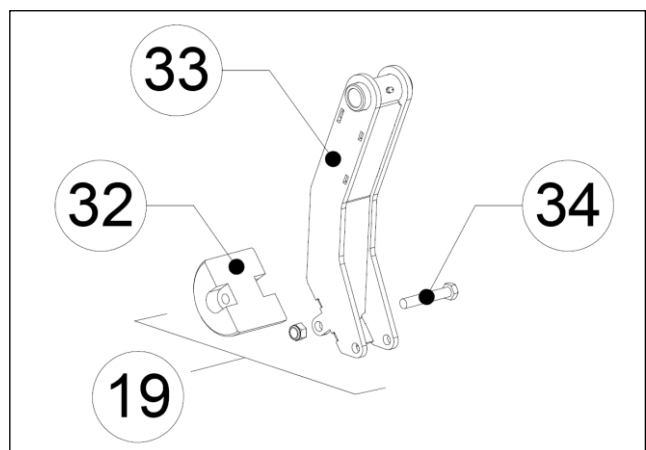
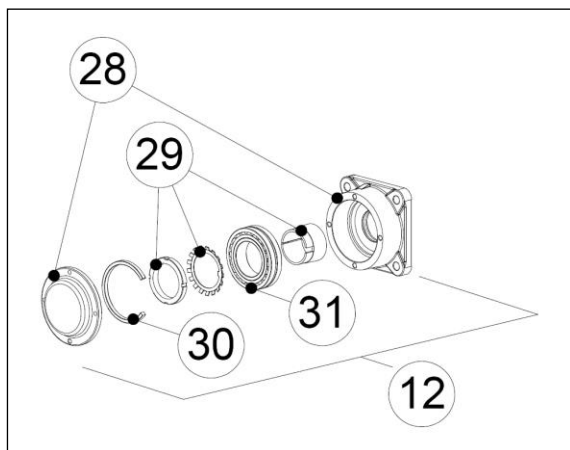
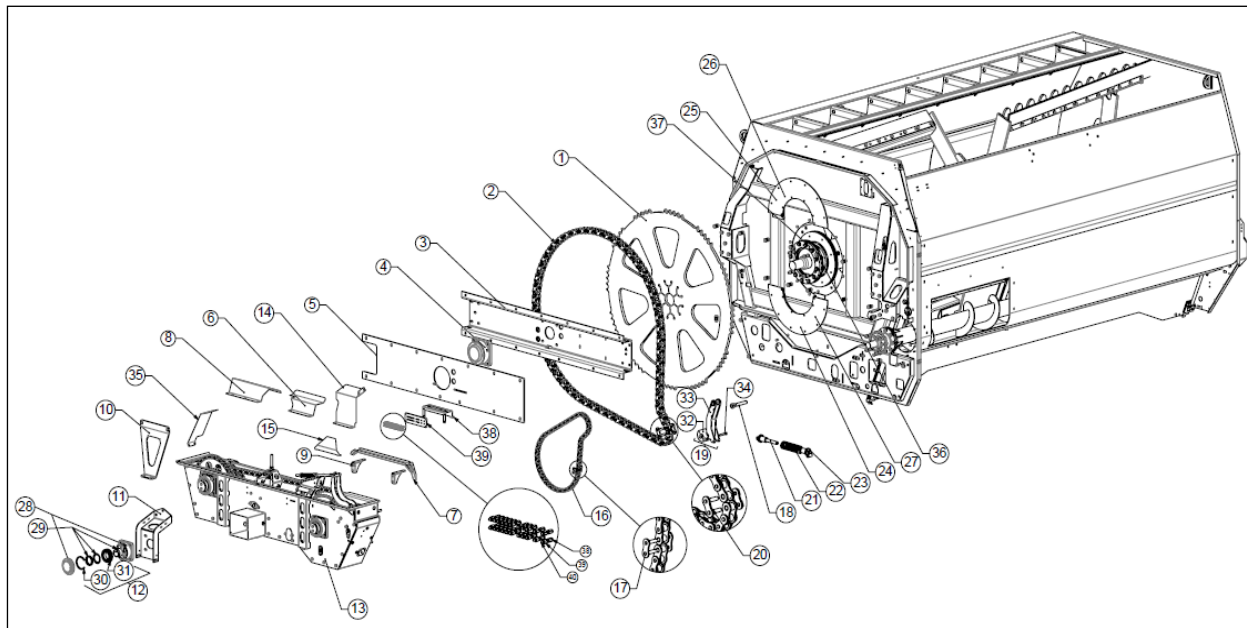
2.7 VFC-door indicator parts



Item:	P/N:	Qty:	Description:
1	FP280-010-0057	1	VFC-door indicator wire rope assembly (3,150 mm)
2	FP280-010-0056	1	VFC-door indicator cover
3	RD8010-61	1	VFC-door indicator slider assembly
4	FP280-010-0021	1	VFC-door indicator pulley wheel plate assembly 1
5	703625	1	6" extension spring 22-mm OD, 2-mm wire
6	701559	3	VFC-door indicator pulley wheel (50-mm OD, 20-mm wide)
7	FP280-006-0179	2	VFC-door indicator cable access slot cover plate

Table 14: VFC-door indicator parts

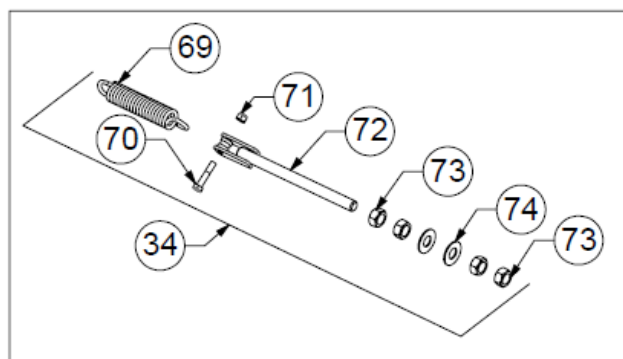
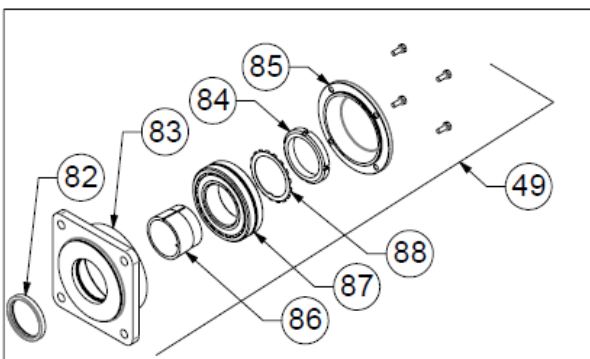
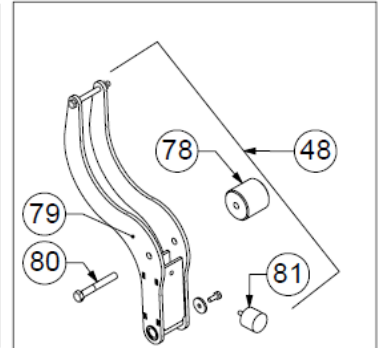
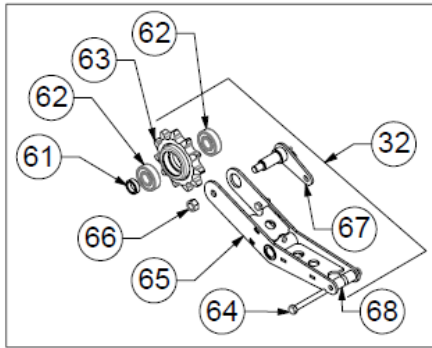
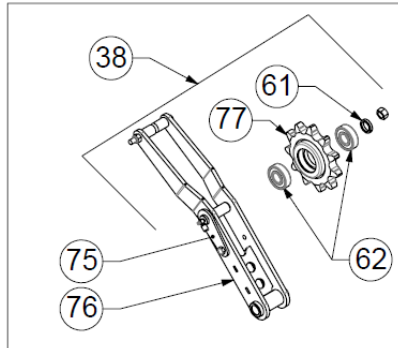
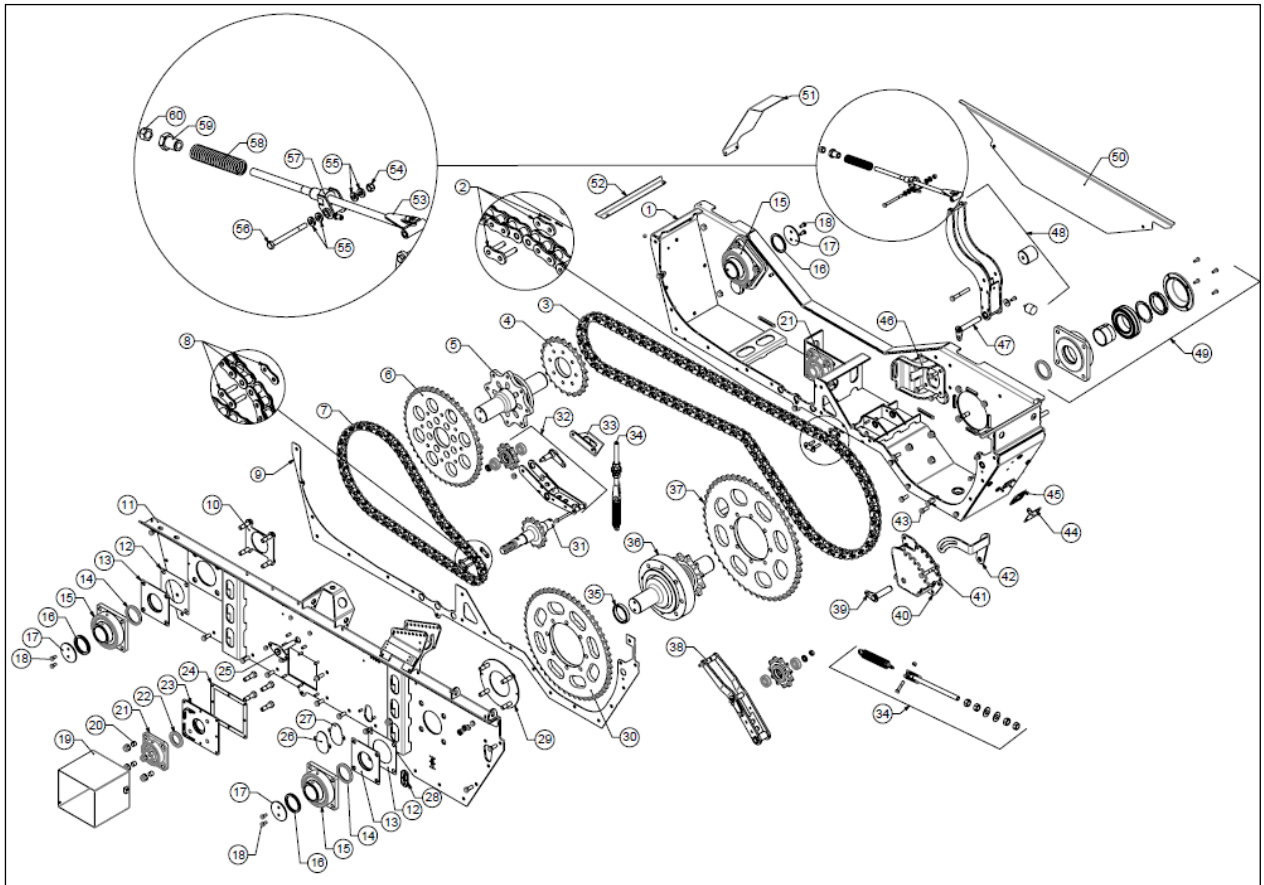
2.8 Driveline parts



Item	P/N	Qty	Description
1	FP280-007-0099	1	Rotor Sprocket
2	704362	1	ASA200 HS series rotor drive chain, 108 pitches and joiner (Diamond)
	705038	1	ASA200 HS series rotor drive chain, 108 pitches and joiner (Sapphire)
3	FP280-017-0012	1	Rotor front bearing carrier
4	FP280-007-0085	1	Rotor bearing assembly
5	FP280-017-0007	1	Rotor front bearing carrier cover plate
6	FP280-048-0707	1	Secondary drive chain oil baffle plate (compression auger tensioner)
7	FP280-048-0518	1	Drive chain oil tray assembly
8	FP280-048-0665	1	Primary drive chain oil baffle plate
9	FP280-048-0521	2	Drive chain oil tray mounting plate
10	FP280-048-0630	1	Chain drive reduction gearbox assembly right side brace plate
11	FP280-048-0495	1	Front auger bearing mounting plate assembly
12	FP160-009-0025	1	Auger front bearing assembly
13	FP280-048-0763	1	Chain drive reduction gearbox assembly (540 RPM input)
	FP280-048-0799	1	Chain drive reduction gearbox assembly (1000 RPM input)
14	FP280-048-0708	1	Auger drive chain inner oil baffle plate
15	FP280-048-0803	1	MF400+ center oil baffle plate

16	704363	1	ASA120 standard series auger chain, 70 pitches and joiner (Diamond)
	705039	1	ASA120 standard series auger chain, 70 pitches and joiner (Sapphire)
17	704097	1	ASA120 standard series drive chain slip fit joiner link (Diamond)
	705027	1	ASA120 standard series drive chain slip fit joiner link (Sapphire)
18	FP280-048-0466	1	Rotor drive chain tensioner pivot pin assembly
19	FP280-048-0448	1	Rotor drive chain tensioner arm assembly 2
20	704908	1	ASA200 HS series drive chain slip fit joiner link (Diamond)
	705030	1	ASA200 HS series drive chain slip fit joiner link (Sapphire)
21	FP280-048-0255	1	ASA200 chain tensioner compression spring inner seat assembly
22	704196	1	Compression spring – 12 mm wire, 80 mm OD, 280 mm long
23	FP280-048-0250	1	ASA200 chain tensioner compression spring outer seat assembly
24	FP280-002-0294	1	Rotor front cover plate
25	FP280-002-0294	1	Rotor front cover plate
26	FP280-002-0296	1	Rotor cover base plate
27	FP280-002-0296	1	Rotor cover base plate
28	703753	1	F516A bearing housing and cover
29	701457	1	H316, 70 mm bore adaptor sleeve, ring nut and castellated washer
30	704122	1	Bearing spacer ring, SR140 x 10
31	700847	1	22216K bearing insert
32	FP280-048-0452	1	Rotor drive chain tensioner wear block
33	FP280-048-0266	1	ASA200 chain tensioner arm assembly 1
34	700268	1	M16 x 100 mm bolt
35	FP280-048-0797	1	MF400+ RH sprocket oil baffle
36	FP280-007-0166	1	Rotor sprocket nut retainer
37	FP280-007-0160	1	Rotor sprocket mounting flange
38	FP280-017-0015	1	Central greasing bracket
39	FP280-048-0709	1	Mechfiber400 drive system central greasing 22-port manifold
40	704914	22	Grease tube connector – straight – M6 thread
41	704947	22	Grease fitting adaptor – 1/8" BSP external and M6 internal to 1/8" internal – 19 mm long
42	701129	22	Grease fitting, straight, 1/8 BSP

Table 15: Drive system parts

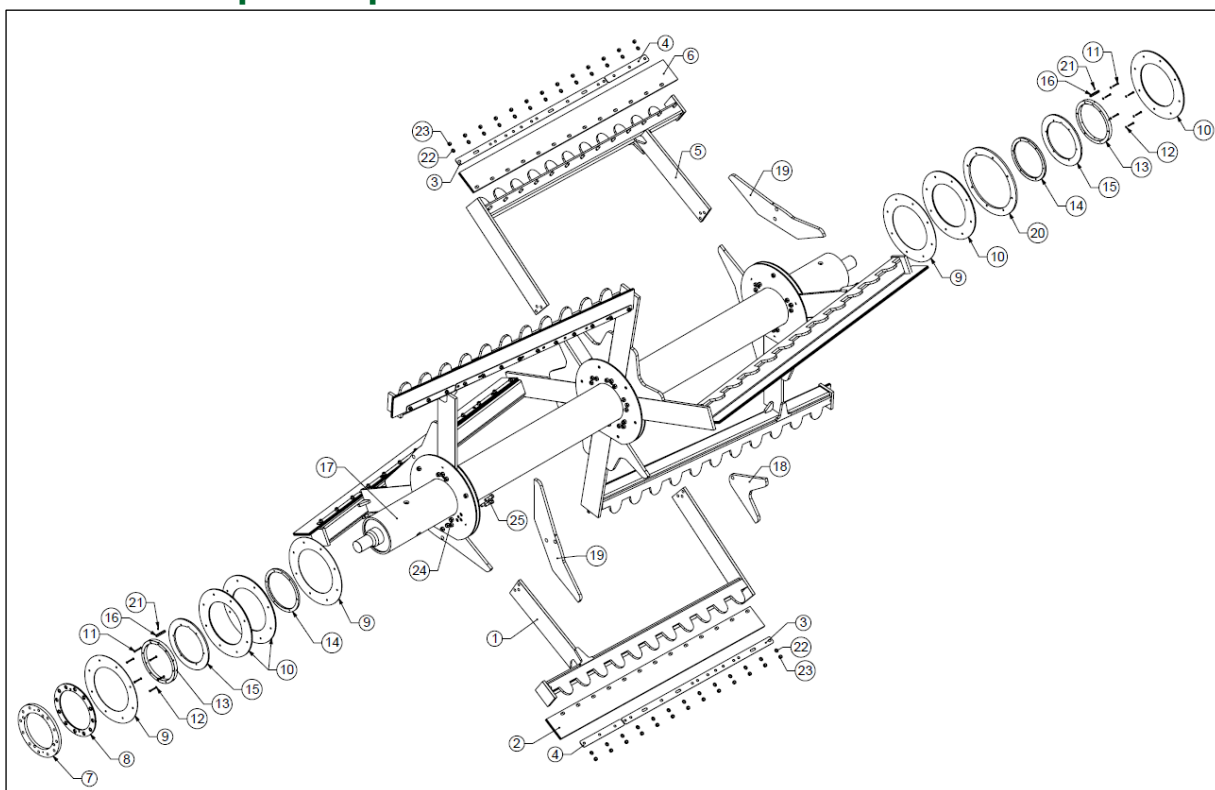


Item	P/N	Qty	Description
1	FP280-048-0764	1	Drive system housing assembly
2	704097	1	ASA140 HS drive chain slip fit joiner link (Diamond)
	705027	1	ASA140 HS drive chain slip fit joiner link (Sapphire)
3	704361	1	ASA140 HS secondary chain, 118 pitches inc. joiner (Diamond) 540 RPM
	705037	1	ASA140 HS secondary chain, 118 pitches inc. joiner (Sapphire) 540 RPM
3	705135	1	ASA140 HS secondary chain, 116 pitches inc. joiner (Diamond) 1000 RPM
	705136	1	ASA140 HS secondary chain, 116 pitches inc. joiner (Sapphire) 1000 RPM
4	FP280-048-0406	1	23-tooth ASA140 sprocket (secondary driver) (540 RPM input)
	FP280-048-0675	1	19-tooth ASA140 sprocket (secondary driver) (1000 RPM input)
5	FP280-048-0731	1	Primary drive idler shaft assembly 1 (540 RPM input)
	FP280-048-0734	1	Primary drive idler shaft assembly 1 (1000 RPM input)
6	FP280-048-0405	1	47-tooth ASA140 sprocket (secondary driver) (540 RPM input)
	FP280-048-0335	1	60-tooth ASA140 sprocket (secondary driver) (1000 RPM input)
7	704360	1	ASA120 standard series primary chain, 72 pitches inc. joiner (Diamond) 540 RPM
	705036	1	ASA120 standard series primary chain, 72 pitches inc. joiner (Sapphire) 540 RPM
7	704359	1	ASA100 duplex primary chain, 88 pitches inc. joiner (Diamond) 1000 RPM
	705035	1	ASA100 duplex primary chain, 88 pitches inc. joiner (Sapphire) 1000 RPM
8	704097	1	ASA120 standard series drive chain slip fit joiner link (Diamond) 540 RPM
	705027	1	ASA120 standard series drive chain slip fit joiner link (Sapphire) 540 RPM
8	704911	1	ASA100 duplex drive chain slip fit joiner link (Diamond) 1000 RPM
	705026	1	ASA100 duplex drive chain slip fit joiner link (Sapphire) 1000 RPM
9	FP280-048-0784	1	MF400 driveline nitrile rubber seal
10	FP280-048-0728	1	Front primary idler bearing bolt positioning ring assembly
11	FP280-048-0765	1	Drive system front panel assembly
12	FP200-048-0389	2	Front idler bearing seal housing gasket
13	FP200-048-0395	2	Idler shaft front seal holder plate
14	705818	2	Oil seal – 90mm x 110mm x 12mm
15	702294	3	UCF X18, 90 mm bearing steel housing
16	FP280-048-0397	10	Idler shaft thrust shim (3mm)
17	FP280-048-0395	3	Idler shaft thrust washer
18	700246	6	M12 x 25 bolt
19	FP280-037-0134	1	PTO shroud
20	FP280-048-0716	8	Bearing bolt collar (UCF 310)
21	704410	2	FYH UCF310 50 mm bearing with cast 4-bolt flange housing
22	701749	1	90 mm OD x 60 mm ID x 10 mm wide oil seal
23	FP280-048-0603	1	Input shaft front flange plate
24	FP280-037-0156	1	PTO shroud inner seal
25	FP280-048-0418	1	Primary drive tensioner arm pivot pin assembly
26	FP280-048-0774	1	Pin access hole cover plate
27	FP280-048-0785	1	Pin access hole nitrile rubber seal
28	705828	1	Oil level window
29	FP280-048-0780	1	MF400 front idler bearing bolt positioning ring
30	FP280-048-0408	1	53-tooth, ASA120 sprocket (auger driver)
31	FP280-048-0410	1	Spline shaft and 13-tooth ASA120 sprocket (540 RPM)
	FP280-048-0411	1	Spline shaft and 11-tooth ASA100 duplex sprocket (1000 RPM)
32	FP280-048-0412	1	Primary drive chain tensioner arm assembly 2 (540 RPM)
	FP280-048-0583	1	Primary drive chain tensioner arm assembly 2 (1000 RPM)
33	FP280-048-0373	1	Primary chain tensioner arm pivot pin brace plate
34	FP280-048-0423	2	Chain tension adjuster assembly 2
35	FP280-048-0534	1	Secondary idler shaft front thrust washer collar
36	FP280-048-0311	1	Rotor drive idler shaft assembly 1

Item	P/N	Qty	Description
37	FP280-048-0407	1	51-tooth, ASA140 sprocket (secondary driven)
38	FP280-048-0424	1	Secondary drive chain tensioner arm assembly 2
39	FP280-048-0515	1	Rotor drive chain tensioner pivot pin assembly
40	FP280-048-0453	1	Rotor drive chain tensioner adjuster arm mount assembly
41	700270	1	M16 x 120 mm bolt
42	FP280-048-0775	1	Auger chain tensioner arm striker plate
43	703148	22	M16 x 40mm set screw
44	FP380-048-0209	1	Oil sensor access plate
45	FP380-048-0208	1	Oil sensor access plate gasket
46	FP280-048-0438	1	Secondary drive tensioner adjuster plate assembly
47	FP280-048-0639	1	Auger drive chain tensioner pivot pin assembly
48	FP280-048-0677	1	Auger drive chain tensioner arm assembly 2 (compression type)
49	FP280-048-0723	1	90 mm taper lock bearing assembly complete (steel housing)
50	FP280-048-0798	1	MF400+ driveline rear cover plate
51	FP280-048-0797	1	MF400+ RH sprocket oil baffle
52	FP280-048-0796	1	Oil drip rail RH
53	FP280-048-0689	1	Chain tension adjuster assembly 1 (compression type)
54	700266	1	M12 locknut
55	FP280-048-0699	4	Auger chain tensioner compression spring inner seat spacer
56	701968	1	M12 x 130 bolt
57	FP280-048-0692	1	Auger chain tensioner compression spring inner seat assembly
58	705042	1	Compression spring - 5.89 mm wire, 32 mm ID, L= 240 mm, 16.1 coils
59	FP280-048-0695	1	Auger chain tensioner spring outer seat
60	700305	1	M20 locknut
61	FP280-048-0245	2	ASA120 chain tensioner axle spacer
62	704227	4	6305.2RS C3 deep groove ball bearing
63	FP280-048-0224	1	ASA120 chain tensioner sprocket assembly 1 (540 RPM input)
	FP280-048-0585	1	ASA120 chain tensioner sprocket assembly 1 (1000 RPM input)
64	700242	1	M12 x 100 mm bolt
65	FP280-048-0413	1	Primary chain tension arm assembly 1
66	700283	2	M16 locknut
67	FP280-048-0232	2	ASA120 chain tensioner sprocket axle assembly 2
68	FP280-048-0420	1	Drive chain tensioner spring mounting bush
69	704367	2	Tension spring - 8.84 mm wire, 45 mm OD, 220 mm long
70	700259	2	M12 x 60 mm bolt
71	700266	1	M12 locknut
72	FP280-048-0422	2	Chain tension adjuster assembly 1
73	705120	8	M24 x 3 mm hex nut
74	705121	4	25 mm x 54 mm x 3 mm washer
75	FP280-048-0232	2	ASA120 chain tensioner sprocket axle assembly 2
76	FP280-048-0433	1	Secondary chain tension arm assembly 1
77	FP280-048-0426	1	ASA140 chain tensioner sprocket assembly 1
78	FP280-048-0680	1	Auger drive chain tensioner polypenco roller (compression type)
79	FP280-048-0678	1	Auger drive chain tensioner arm assembly 1
80	700270	1	M16 x 120 mm bolt
81	705044	1	50 mm OD rubber damper - "D" type
82	705818	1	Oil seal – 90 mm x 110 mm x 12 mm
83	FP280-048-0718	1	Idler shaft inner bearing housing flange
84	701166	1	H520, 90 mm bore adaptor sleeve, ring nut and castellated washer
85	705816	1	722520A bearing cap
86	701166	1	H520, 90 mm bore adaptor sleeve, ring nut and castellated washer
87	700861	1	22220K bearing insert
88	701166	1	H520, 90 mm bore adaptor sleeve, ring nut and castellated washer

Table 16: Drive system parts (540/1000 RPM)

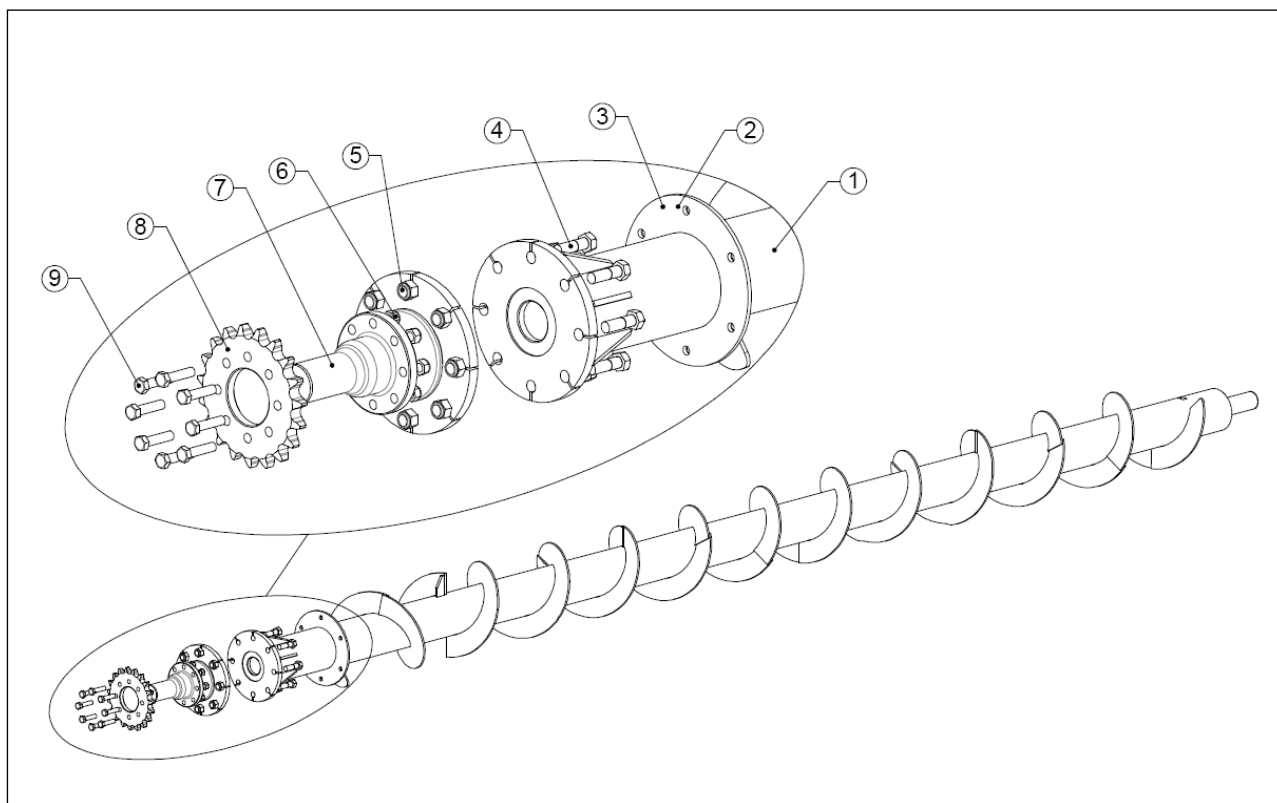
2.9 Rotor and paddle parts



Item:	P/N:	Qty:	Description:
1	FP280-008-0125	3	Front paddle assembly (rounded castellations)
2	702289	3	Front paddle rubber
3	FP140-008-0009	6	Paddle rubber retainer (long section)
4	FP200-008-0010	6	Paddle rubber retainer (short section)
5	FP280-008-0126	3	Rear paddle assembly (rounded castellations)
6	702290	3	Rear paddle rubber
7	FP280-007-0160	1	Rotor sprocket mounting flange
8	FP280-007-0166	1	Rotor sprocket nut retainer
9	FP280-002-0295	2	Rotor seal clamp plate
10	705954	3	Rubber sealing ring
11	700217	6	M8 X 55 bolt
12	700736	6	M8 flat washer
13	FP280-007-0158	1	Machined sealing ring outer section
14	FP280-007-0157	1	Machined sealing ring inner section
15	FP280-007-0156	1	Sealing ring centre section
16	FP280-007-0163	1	Rotor seal ring key
17	FP280-007-0147	1	Rotor assembly
18	FP280-007-0090	6	Centre paddle block
19	FP280-007-0091	6	End paddle block
20	FP280-002-0298	1	Rotor seal rear spacer
21	704579	12	M8 x 1.25, 16 mm long grub screw
22	700732	78	M16 flat washer
23	700283	78	M16 locknut
24	700305	36	M20 locknut
25	700298	36	M20 x 70mm bolt

Table 17: Rotor assembly

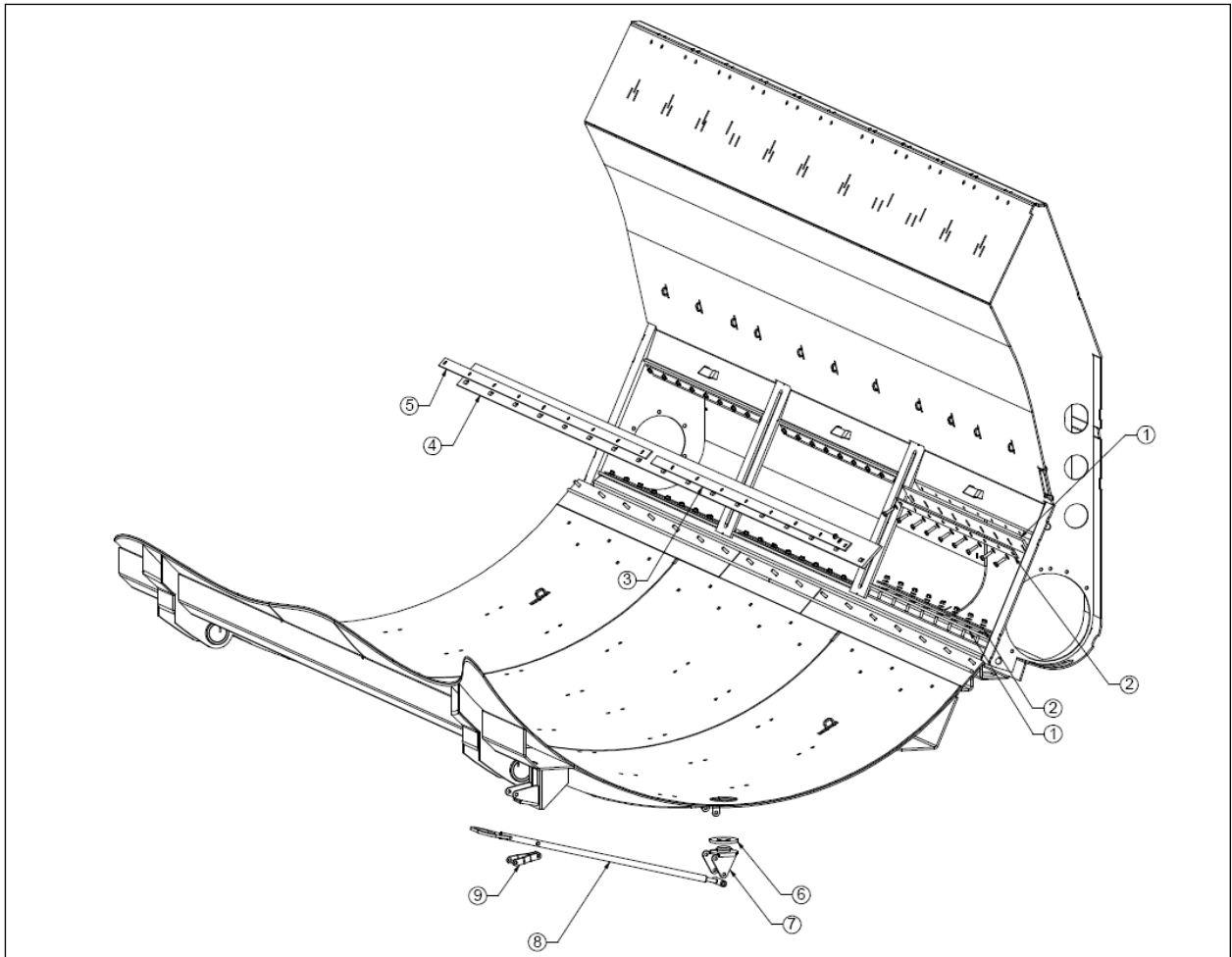
2.10 Auger parts



Item:	P/N:	Qty:	Description:
1	FP280-009-0080	1	Auger assembly 1
2	FP280-002-055	2	Auger rubber seal retainer
3	FP280-009-0070	2	Auger front seal rubber
4	700297	8	M20 x 65 bolt
5	700305	8	M20 locknut
6	700283	8	M16 locknut
7	FP280-009-0083	1	Auger front stub shaft assembly
8	FP280-048-0342	1	19-tooth, ASA120 sprocket (auger driven)
9	700277	8	M16 x 65 bolt

Table 19: Auger assembly

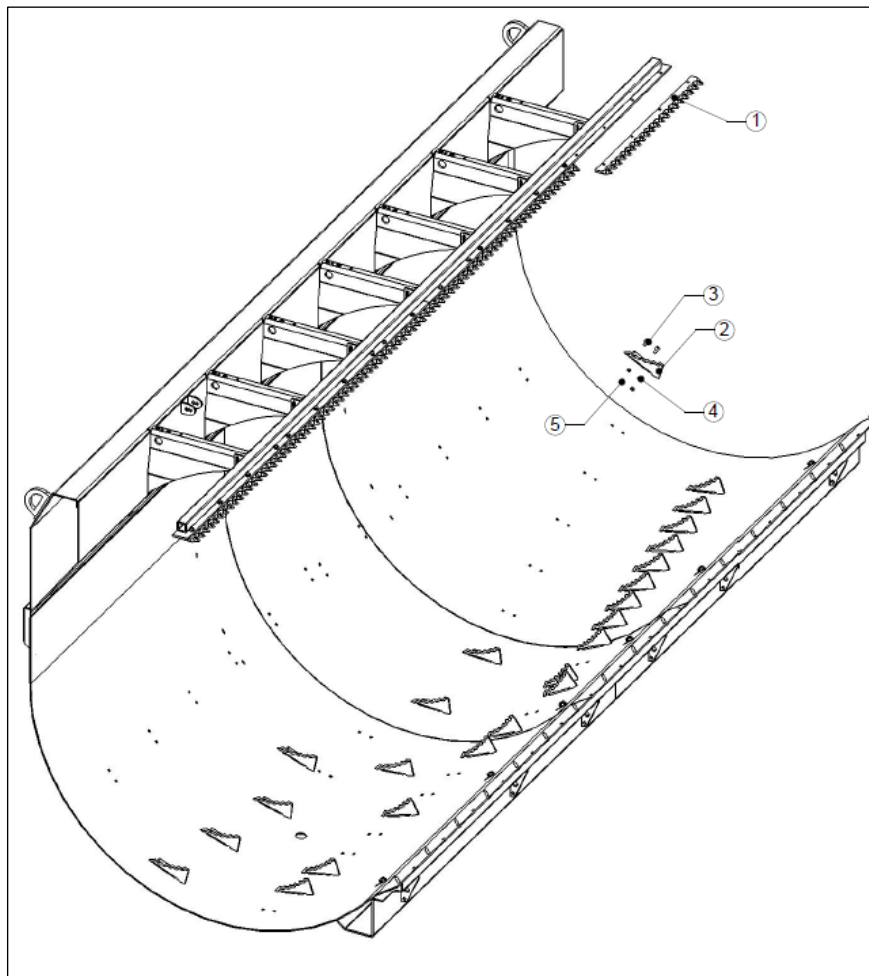
2.11 Body sealing parts



Item:	P/N:	Qty:	Description:
1	701199	6	VFC-door outer seal rubber
2	FP200-006-0076	6	VFC-door shroud seal retaining flat
3	FP280-004-0039	1	VFC-door inner seal retainer (front)
4	701293	1	VFC-door inner seal
5	FP280-004-0040	1	VFC-door inner seal retainer (rear)
6	703246	1	Drain bung rubber seal
7	FP280-004-0041	1	Drain bung cover plate assembly 1
8	FP280-004-021	1	Drain bung lever assembly 2
9	FP280-004-029	2	Drain bung lever toggle link
10	FP280-010-009	2	VFC-door front and rear end retainer (not shown)
11	704876	2	VFC-door end rubber seal (not shown)

Table 20: Body seals

2.12 Body blade parts



Item:	P/N:	Qty:	Description:
1	701518	5	Top knife blade — 990 mm long
	704229	5	Top knife blade — 990 mm long — deep serrations
2	703955	52*	Body blade — 5 mm thick
	703957	52*	Body blade — 6.25 mm thick
3	700226	104	M10 x 30-mm cuphead bolt (8.8 grade)
	705405**	104	M10 x 40-mm cuphead bolt (8.8 grade)
4	700241	104	M10 hex nut
5	700737	104	M10 spring washer

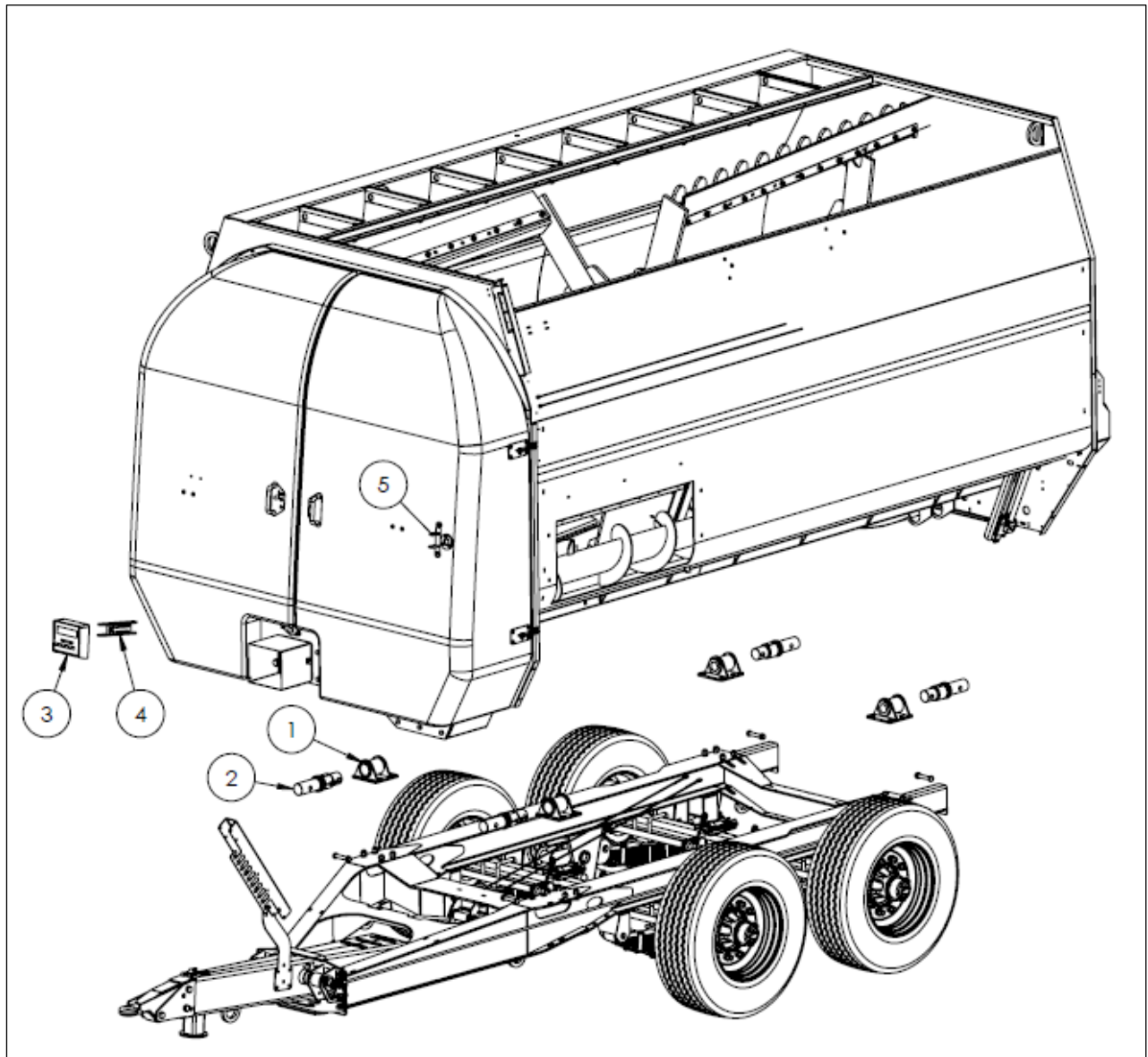
Table 21: Blades

*There are 30 blades used as the standard on the MechFiber400+.

Extra blades may be added depending on the machine specifications up to a maximum of 52.

**Used only in conjunction with body liner.

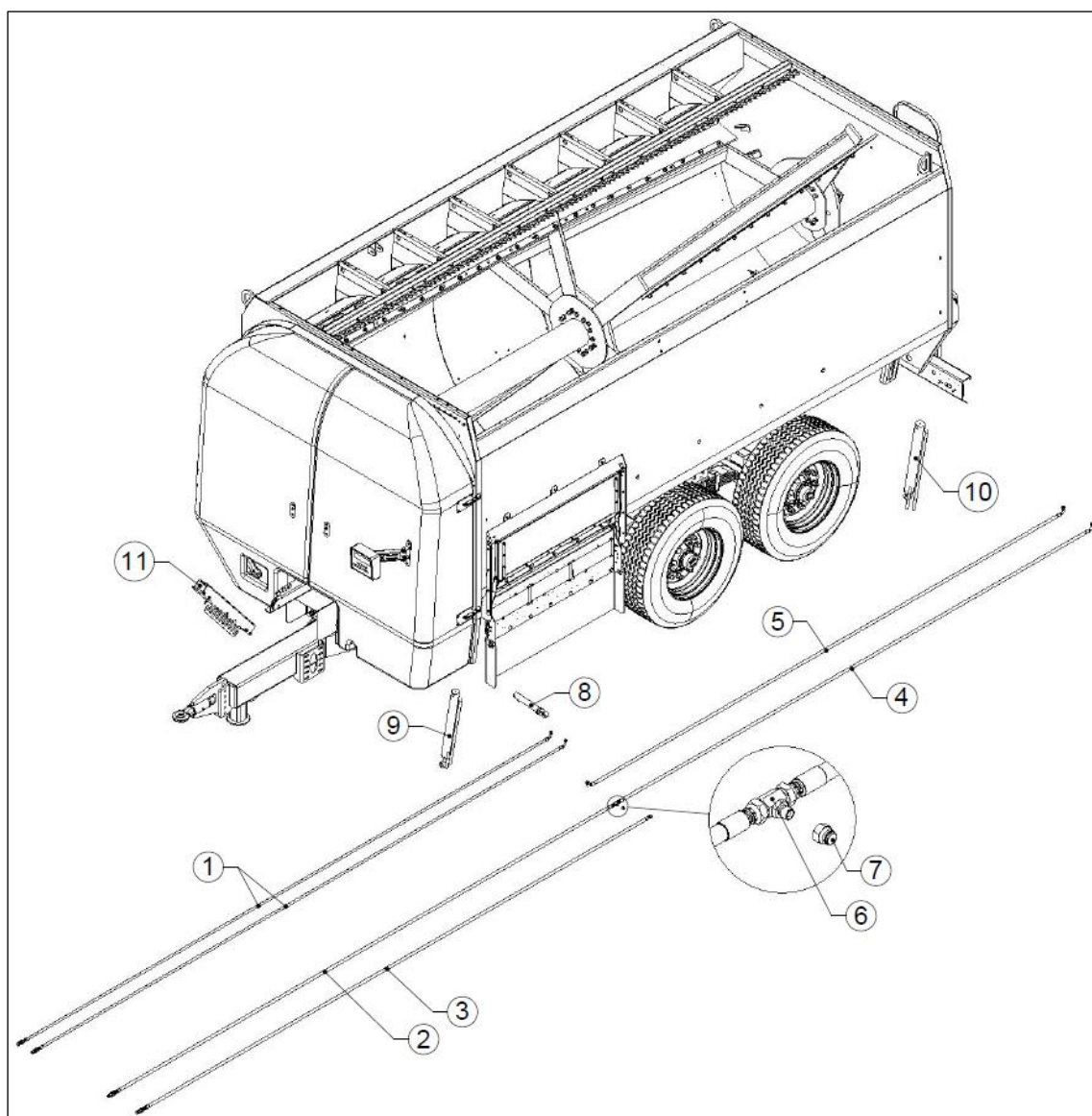
2.13 Weighing system



Item:	P/N:	Qty:	Description:
1	FP280-001-081	4	Weighbar bracket assembly
2	705671	4	Weigh cell — 2.875" diameter — 9.35-m cable (DG 969-0127)
3	703353	1	Weighbox (Stad 04)
	707017	1	Weighbox (DG400) introduced in March 2023
4	EF102-115	1	Weighbox arm
4a	EF102-117	1	Cranked weighbox arm
5	FP380-037-0082	1	Weighbox mounting bracket

Table 22: Weighing system

2.14 Hydraulic system parts



Item	P/N	Qty	Description
1	702106	2	¼" Hydraulic feed-out hose assembly – 5,502 mm
2	701515	1	Hydraulic hose – tractor to rear VFC-door ram
3	701514	1	Hydraulic hose – tractor to front VFC-door ram
4	N/A		
5	701513	1	Hydraulic hose – front VFC-door ram to rear VFC-door ram
6	N/A		
7	N/A		
8	703591	1	6" stroke feed-out tray ram assembly
9	704955	1	Front VFC-door ram (Keen 52)
10	704954	1	Rear VFC-door ram (Keen 51)
11	FP160-001-0095	1	Hydraulic hose arm

Table 23: Hydraulic system

2.15 Axle Parts

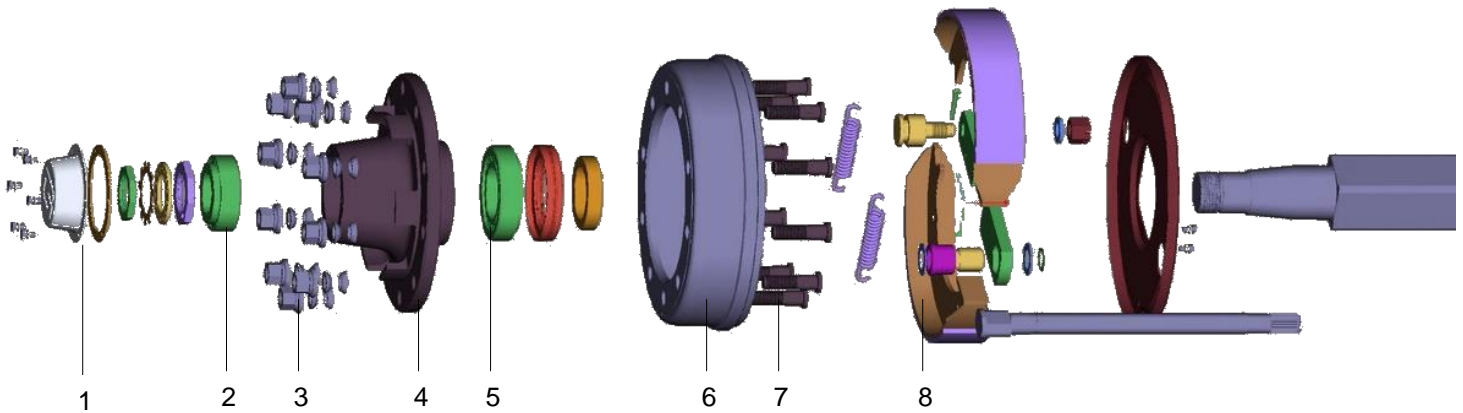


Figure 16: Typical axle (exploded view)

Axle options

Axle types				
Axle application	MechFiber400+			
Axle type	Non-steering	steering	Non-steering	steering
Axle width (mm)	2400	2500	2400	2500
Axle specification	EBB 130 (Colaert)		D120-4012 (HO's)	
Brake type/dimensions (Type/diameter x width, mm)	412E, 406 x 120		S406 x 120	
No. studs	10		10	
Nut size	M22 x 1.5		M22 x 1.5	

Axle spare parts	
Item No:	Description:
1	Hub cap
2	Outer bearing
3	Nut (with washer)
4	Hub
5	Inner bearing
6	Brake drum
7	Stud
8	Brake shoe

Table 24: Axle types and axle spare parts

Note: *Supplied as a kit

2.16 Ancillary parts

PTO Shaft		
P/N	Qty	Description
704355	1	PTO, T80 shaft, 1-3/8" Z6 x 1-3/4" Z6. M12 x 5.6 shear bolt
704356	1	PTO, V80 wide-angle shaft, 1-3/8" Z6 x 1-3/4" Z6. M12 x 5.6 shear bolt
Grease fittings		
P/N	Qty	Description
704913	1	Grease tube swivel connector – 90-degree bend – M6 thread
704914	1	Grease tube connector – straight – M6 thread
704915	1	Grease fitting connector – straight – 1/8" BSP to M6
704941	1	Grease tube connector – straight – 6-mm thread
704942	1	Grease tube connector – straight – 8-mm thread
704943	1	Grease tube connector – straight – 1/8" BSP thread
704944	1	Grease tube connector – 90-degree bend – 1/8" BSP thread
704945	1	Grease tube connector – 90-degree bend – M6 thread
704946	1	Grease tube swivel connector – 90-degree bend – 1/8" BSP thread
704947	1	Grease fitting connector – straight – 1/8" BSP to M6
Spool valve parts		
P/N	Qty	Description
701215	1	2 bank with detent
701216	1	2 bank without detent
701218	1	3 bank with detent
701219	1	3 bank without detent
702269	1	4 bank with detent
701208	1	4 bank without detent
702450	1	5 bank with detent
704447*	1	Electro-hydraulic spool valve kit, 4 bank (contains 704445 and 704446)
704525	1	Electro-hydraulic spool valve kit, 5 bank
Diverter valve parts (used on French machines)		
P/N	Qty	Description
704139	1	Diverter valve kit (contains 703535 and 704394)
703894	1	Electro-hydraulic diverter valve kit (6 port)
Heavy-duty top knife (standard on all bale handlers)		
P/N	Qty	Description
704229	5	Top knife blade, 990 mm long, deep serrations
Mechanical adjuster		
P/N	Qty	Description
FP280-006-0180	1	Mechanical adjuster complete assembly

Table 25: Ancillary parts

*4 bank can be reduced to 3 bank if required using the same part number.

3 Annexes

3.1 EC Declaration of Conformity

EC Declaration of Conformity.

In accordance with Directive 2006/42/EC.

Manufacturer:

Alltech Farming Solutions Ltd.

Borris

Co. Carlow

Ireland

Certifies that the KEENAN MechFiber400+ comply with the essential safety requirements of the Directive 2006/42/EC.

To conform to these essential health and safety requirements, the provisions of the following harmonized standards were particularly considered:

BS EN ISO 12100, I.S. EN ISO 13857, I.S. EN ISO 5674, EN349, EN703, I.S. EN ISO 4254-1, ISO 11684, ISO 12140

Date: September 2022



Signed: _____

Robert Walker, CEO

3.2 UKCA Declaration of Conformity

UKCA Declaration of Conformity.

In accordance with UK SMSR 2008.

Manufacturer:

Alltech Farming Solutions Ltd.

Borris

Co. Carlow

Ireland

Certifies that the KEENAN MechFiber400+ comply with the essential safety requirements of the UK SMSR 2008.

To conform to these essential health and safety requirements, the provisions of the following harmonized standards were particularly considered:

BS EN ISO 12100, I.S. EN ISO 13857, I.S. EN ISO 5674, EN349, EN703, I.S. EN ISO 4254-1, ISO 11684, ISO 12140

Date: September 2022



Signed: _____

Robert Walker, CEO

3.3 International patents

The KEENAN MechFiber diet feeder and the KEENAN MechFiber bale handler machines are subject to international patents, including the following:

Europe:	E0, 833,558	USA:	5,967,433
Japan:	Pending	Canada:	Pending
Australia:	691418	New Zealand:	305943
South Africa:	96/3148		

4 KEENAN contact details

4.1 Details

Head Office

Alltech Farming Solutions Limited (KEENAN)

Borris, Co. Carlow, R95 K223 Ireland

Telephone: +353 (0) 59 9771200
Fax: +353 (0) 59 9771227
Website: keenansystem.com
Email: keenaninfo@alltech.com

Alltech's Global Headquarters

3031 Catnip Hill Road, Nicholasville, KY 40356, United States of America

Telephone: 859-885-9613
Website: keenansystem.com
Email: keenaninfo@alltech.com

Alltech Farming Solutions (U.K.) Limited KEENAN

Ryhall Road, Stamford, Lincolnshire, United Kingdom, PE9 1TZ

Telephone administration: 0800 587 3296
24-hour service: 0800 587 3296
Fax: 0844 358 3880
Website: keenansystem.com
Email: keenaninfo@alltech.com

KEENAN Australia

53 Pratts Part Road, Bendigo, East Bendigo Vic 3550, Australia

Sales, service and parts: 1 800 KEENAN (1800 533 626)
Website: keenansystem.com
Email: keenaninfo@alltech.com

Action Agriculture Limited

14 Leslie Street, Kihikihi, Te Awamutu 3800, New Zealand

Telephone: 1 800 4 KEENAN
Website: keenansystem.com
Email: info@actionagriculture.co.nz

KEENAN Canada Inc.

20 Cutten Place, Guelph, Ontario N1G 4Z7, Canada

Telephone: 519 763 3331
Fax: 519 763 5682
Website: keenansystem.com
Email: keenaninfo@alltech.com



 @KEENANGlobal

 @KEENANsystem

 @keenan_system

keenansystem.com
#changeformthebetter