



**Alltech®**

## GUT HEALTH MANAGEMENT

### Alltech Gut Health Management

This programme consists of natural, nutritional solutions tailored to address challenges impacting modern dairy and beef production and profitability.

Our goal is to give the customer, an advantage in this competitive marketplace, across all channels, from the quality of our products to our educational workshops, cutting edge research and relationships with high calibre consultants and key persons of influence.

Alltech understands that by improving your farm's efficiency we can increase your profitability, in a sustainable way.

## ACTIGEN®

### Invest in your feed and intestinal health

Numerous studies cite scours as the leading cause of pre-weaned calf deaths. Gastrointestinal (GI) integrity is essential for calves to achieve optimum performance.

Actigen™ is a key part of a strategic calf, dairy and beef programme to maintain gut health and maximise growth.

### Signs of an undernourished or unstable gastrointestinal (GI) tract:

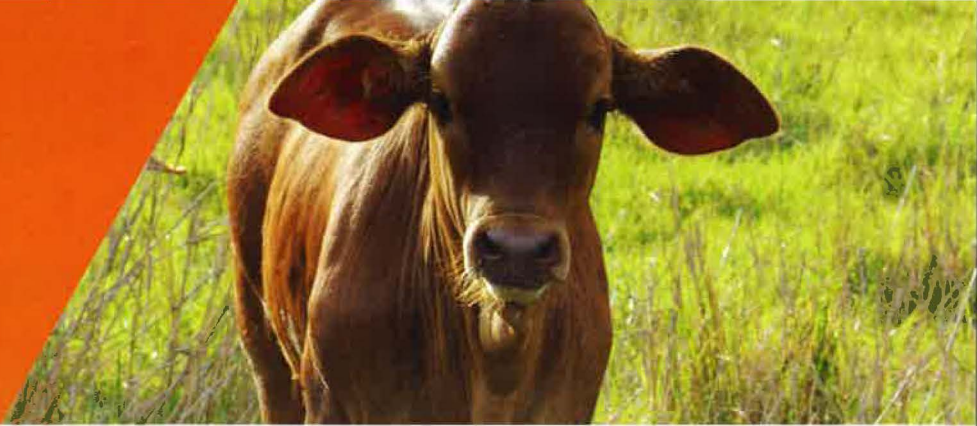
- Poor digestion
- Depressed defence systems
- Increased mortality rates
- Reduction in nutrient transfer and absorption
- Diarrhoea

Everything starts with the development and maintenance of intestinal health, therefore "FEEDING THE GUT" plays a critical role in efficient dairy and beef production strategies.

**Alltech®**

# Alltech®

## GUT HEALTH MANAGEMENT



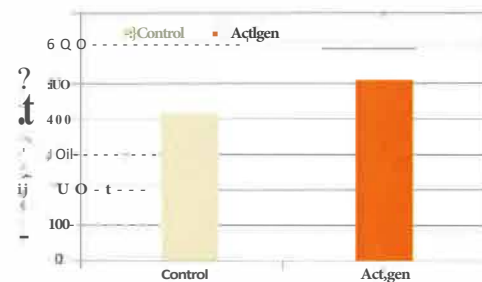
### What is Actigen?

Actigen is a safe and traceable technology derived from a selected strain of *Saccharomyces cerevisiae* yeast using a proprietary process developed by Alltech. Actigen is incorporated into animal diets to support gut integrity, optimise animal performance and help calves reach their genetic potential.

### Research

Trials conducted by Professor Judd Heinrichs from the Penn State University, USA, in 30 heifer calves have shown, that the calves fed with Actigen had:

- Improved growth performance (Average daily gain) by 106 g (graph 1)
- Improved feed to gain ratio, which is a key measure of efficiency (converting feed nutrients into increased body mass) (graph 2)
- A reduction of the severity of scours

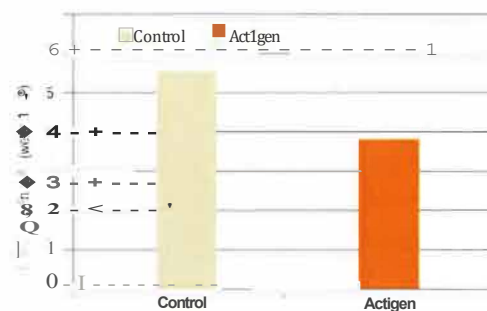


Graph 1

J. Heinrichs et al 2013

### Actigen

- Increases starter intake, body weight gain and efficiency
- Supports overall performance
- Aids in nutrient utilisation
- Contributes to immunity development
- Is fed at low inclusion levels



Graph 2

A.J. Heinrichs et al 2013

### Recommended inclusion rate:

Calves: 1 - 4 g / head / day

Cows: 4 - 8 g / head / day

Feed Actigen through calf milk replacer, fresh milk, starter or pellet.

Quality assured through the use of AQS\*, ELLA\*\* and ELMAA\*\*\* tests.

\*Alltech Quality System™ \*\*ELLA assay allows us to determine the presence of Actigen in the feed, premix or product

\*\*\*ELMAA: ELISA-linked Mucin adherence assay which measures the amount of pathogens bound to Actigen.

For Asia-Pacific Use Only

Alltech (NZ) Limited  
PO Box 69 170  
Glendene  
Auckland 0645  
+64 9 837 3243 0800 ALLTECH  
newzealand@alltech.com

# Alltech®

Alltech.com/newzealand AlltechAP